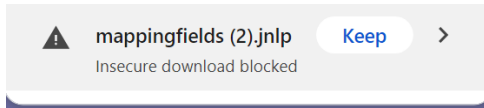


Instructions For Running Simulations **on Windows Machines**  
(Linux and Mac instructions coming soon)  
August 25, 2024  
Questions: jbelcher@mit.edu

1. You must have Java 8 (aka 1.8) installed.
2. Right Click on “Start Simulation” and choose “Save link as ...”.  
Navigate to the directory you want to save in and click save in the lower left corner of the window.  
When you see the window

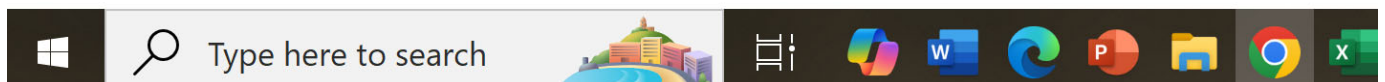


click on “Keep”. . You must do this or the file will not be saved.

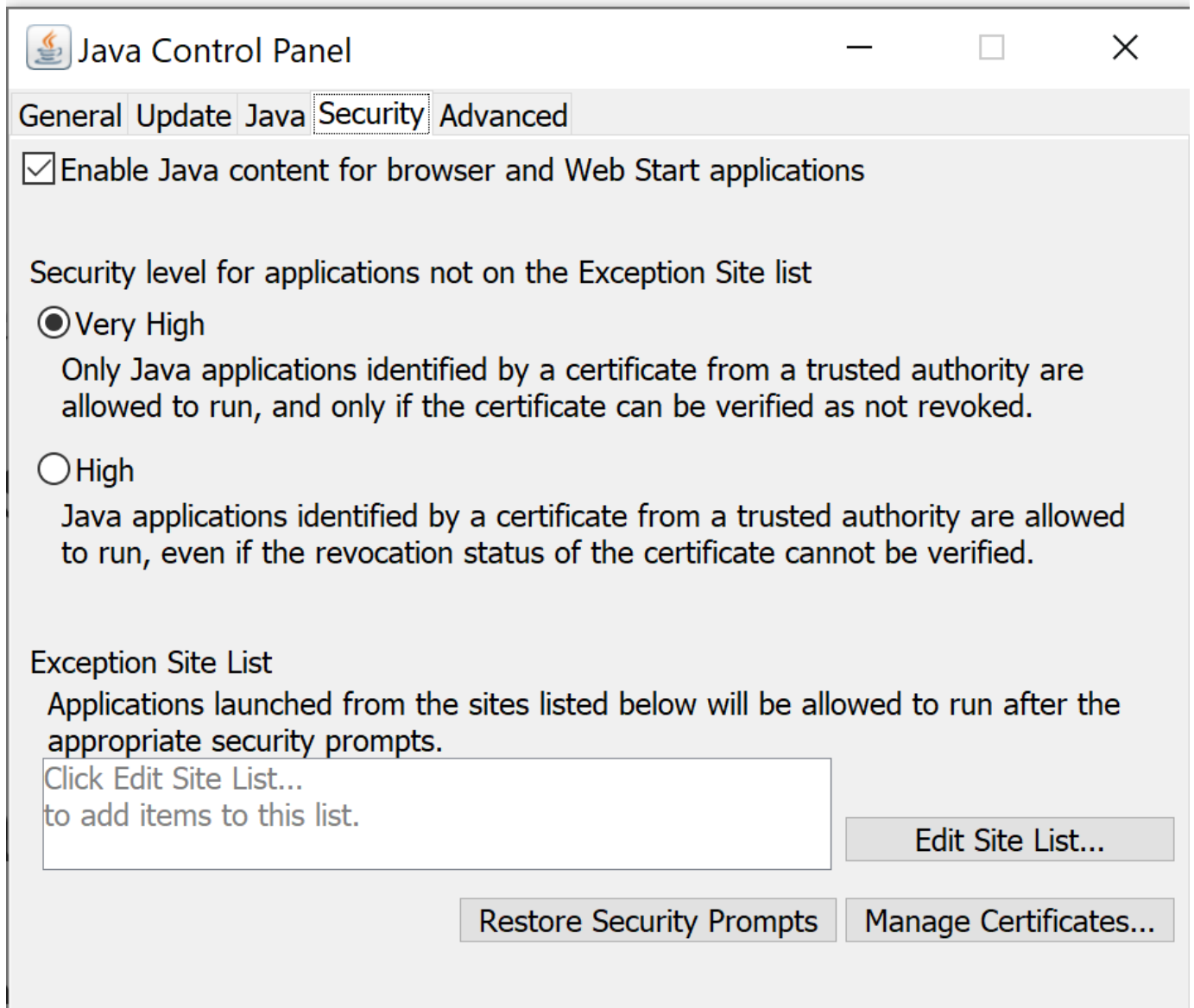
3. Navigate to where you have saved the *jnlp* file and click on it. This should start the *javaws.exe* application in your JRE 1.8 bin folder.
4. You may see a Dialog box saying something like  
"The application’s digital signature cannot be verified. Do you want to run the application?"
5. Click on “Allow”
6. The application should then run. **HOWEVER:**
7. You may also see the screen:



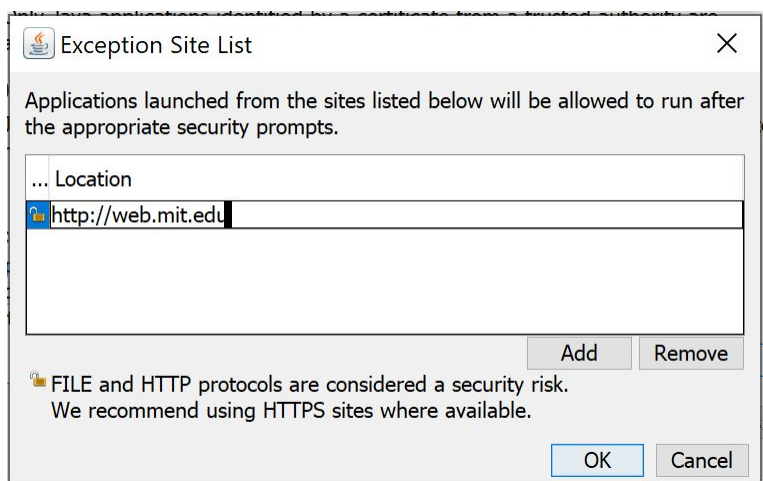
If you see this, you must open the java control panel, by typing in the search box (lower left of your screen) the term “configure java”:



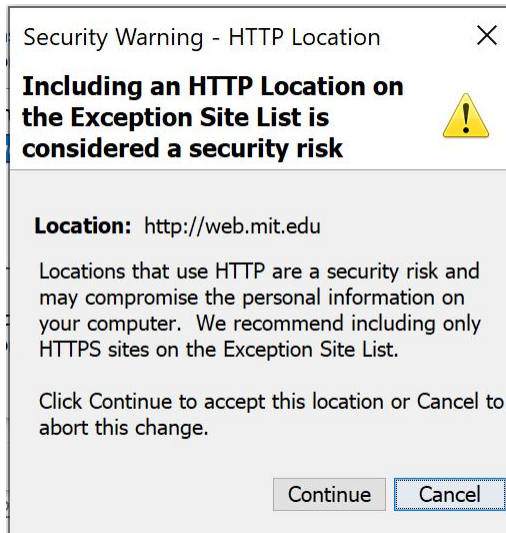
Click on the “Configure Java App”. Go to “Security”:



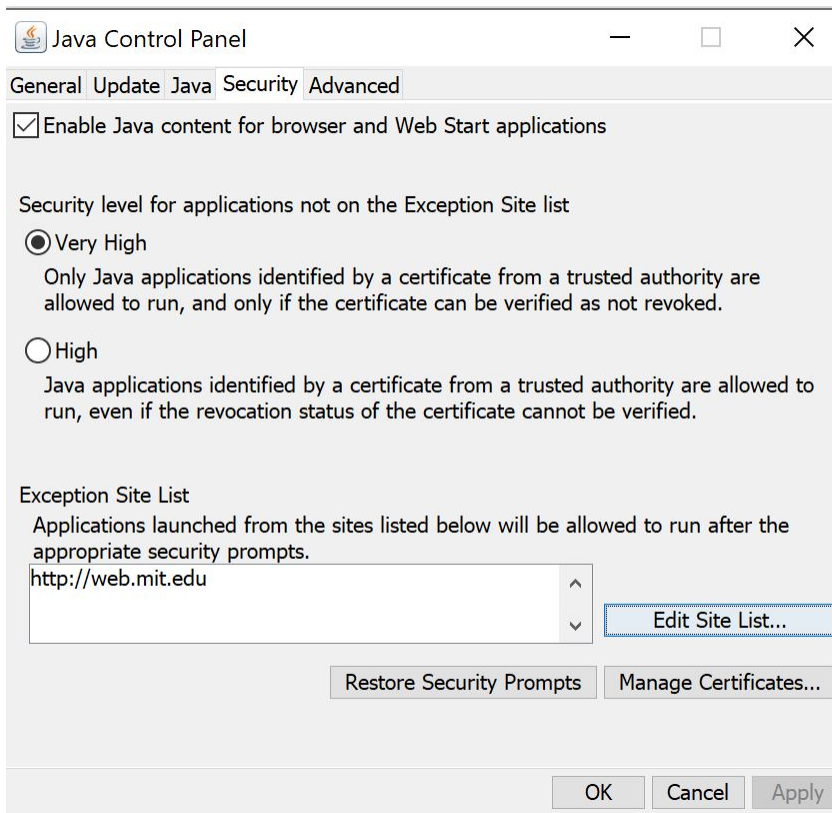
Click on “Edit Site List” and add the site <http://web.mit.edu>. Do **not** enter <https://web.mit.edu>.



The app will caution you about entering an <http://> domain:



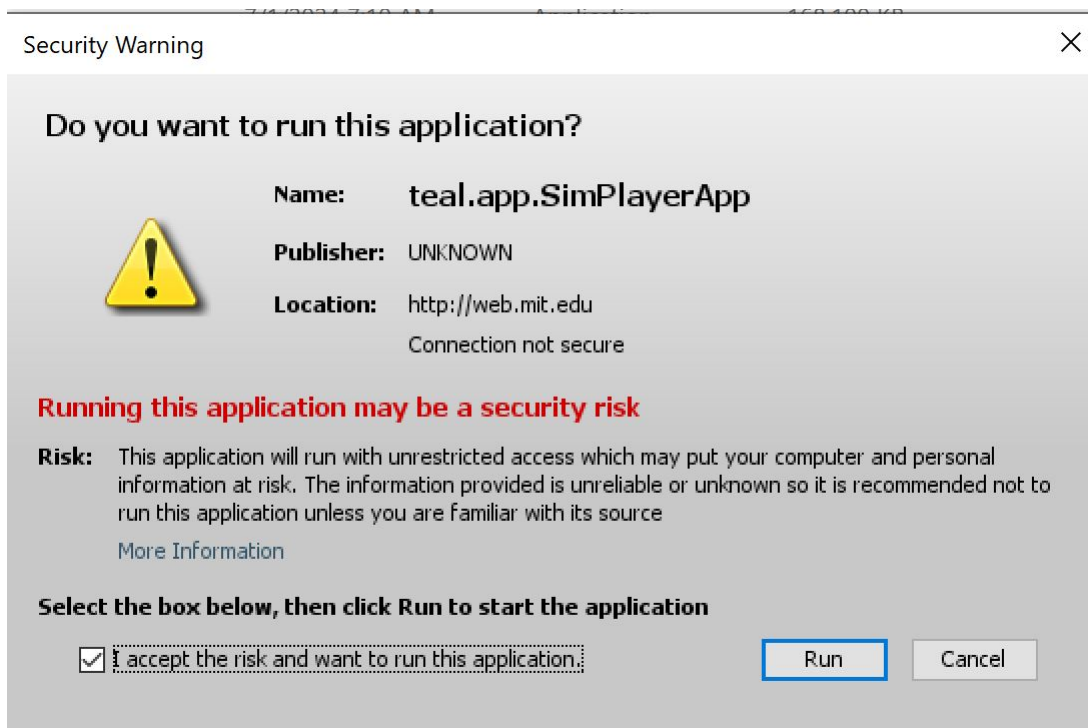
but do it anyways by clicking "Continue". You should then see:



Then close the app.

8. Go back and click on the *jnl*p file.

9. You will now see the screen:



10. Accept the risk and click on “Run”. The application should now run. If it does not, email [jbelcher@mit.edu](mailto:jbelcher@mit.edu) and report the issue.

*Questions: [jbelcher@mit.edu](mailto:jbelcher@mit.edu)*