

## An XMAS Tutorial - using streaming video

Updated: September 21, 2009

E-mail [xmas-support@mit.edu](mailto:xmas-support@mit.edu) for technical assistance

[A. Getting Started](#)

[B. Saving Streaming Video Clips](#)

[C. Writing An Essay](#)

### Getting Started

1 – Open XMAS by double-clicking on the shortcut for XMAS on your computer desktop or by running the XMAS.exe application file. Log in using your username and password. Be patient and allow it to open completely. If you do not have a login, click on the "request account" link in the login window.

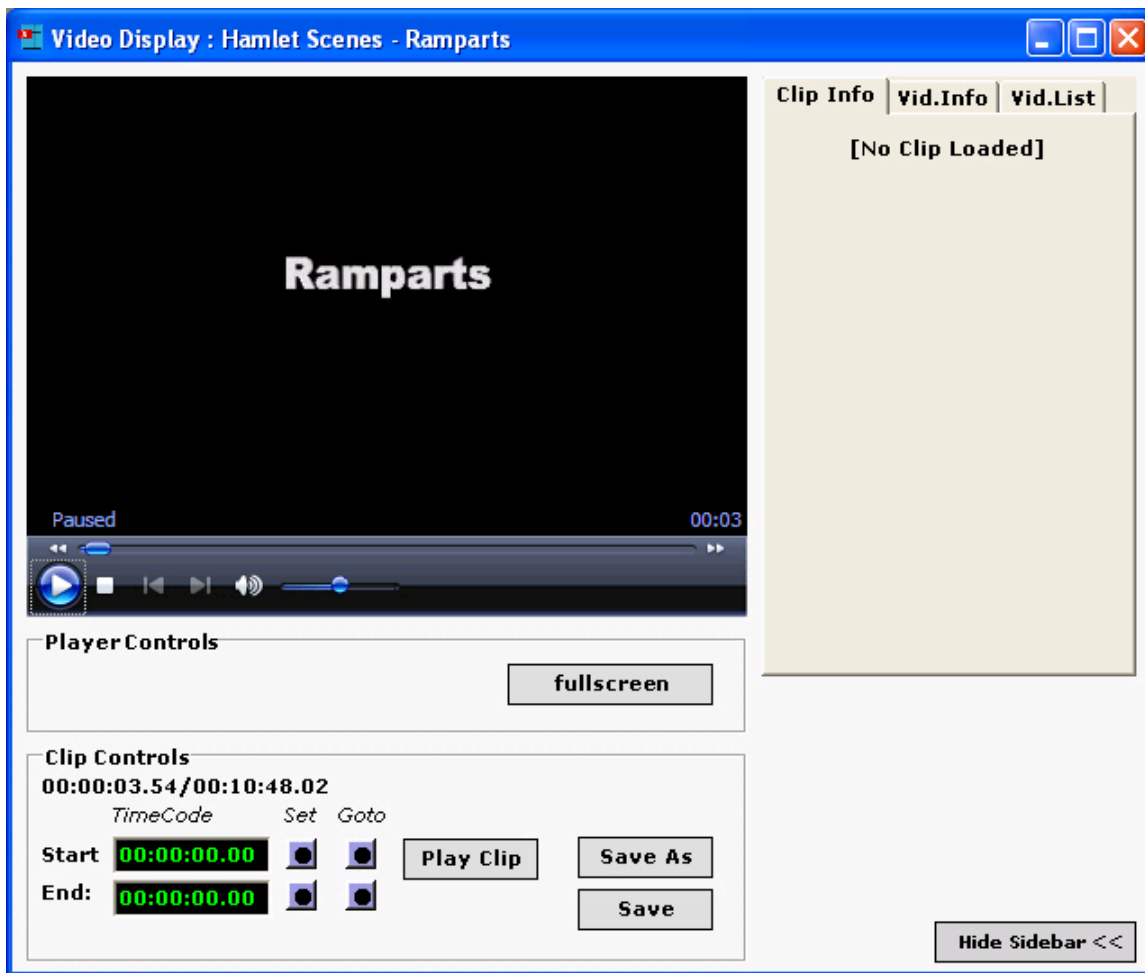


The image shows a Windows-style dialog box titled "XMAS Login". The title bar is blue. Inside the dialog, the text "Enter your username and password." is displayed, with a blue underlined link "(request account)" below it. In the top right corner, there is a small icon of a blue grid with a red 'X' over it. Below the text are two input fields: "Username :" followed by a text box, and "Password :" followed by a text box. At the bottom, there are two buttons: "Start" and "Cancel".

2 – Click "Video Streams" button to view list of titles. Double-click title of the video you want to watch. A Video Display window will then open and video will start playing.

3 – There are the usual controls to Play, Pause, Stop, Rewind and Forward the video. Depending on the speed of your internet connection, you may experience some delay as the streaming video buffers.

4 – You can watch the video full screen by clicking the "fullscreen" button in the video viewer. To exit full screen mode, press the ESC key.



5 – The sidebar of the Video Display window can be collapsed or expanded. By default, it is expanded to display the Clip Information panel. You can also switch to the Video Information or list of videos panels by clicking on the tabs along the top.

### Saving Streaming Video Clips

6 – You can set the “Start/End” points of any clip you desire to capture by clicking the “Set Button” to the right of the Start/End times. (The “Go To” Button here will take you to that point in the Time Code Area.)  
NOTE: Only the title of the video and the timecodes are saved. No part of the video is captured or encoded. Think of this as a video citation or advanced bookmark.

7 – You can test any clip by clicking on “Play Clip.”

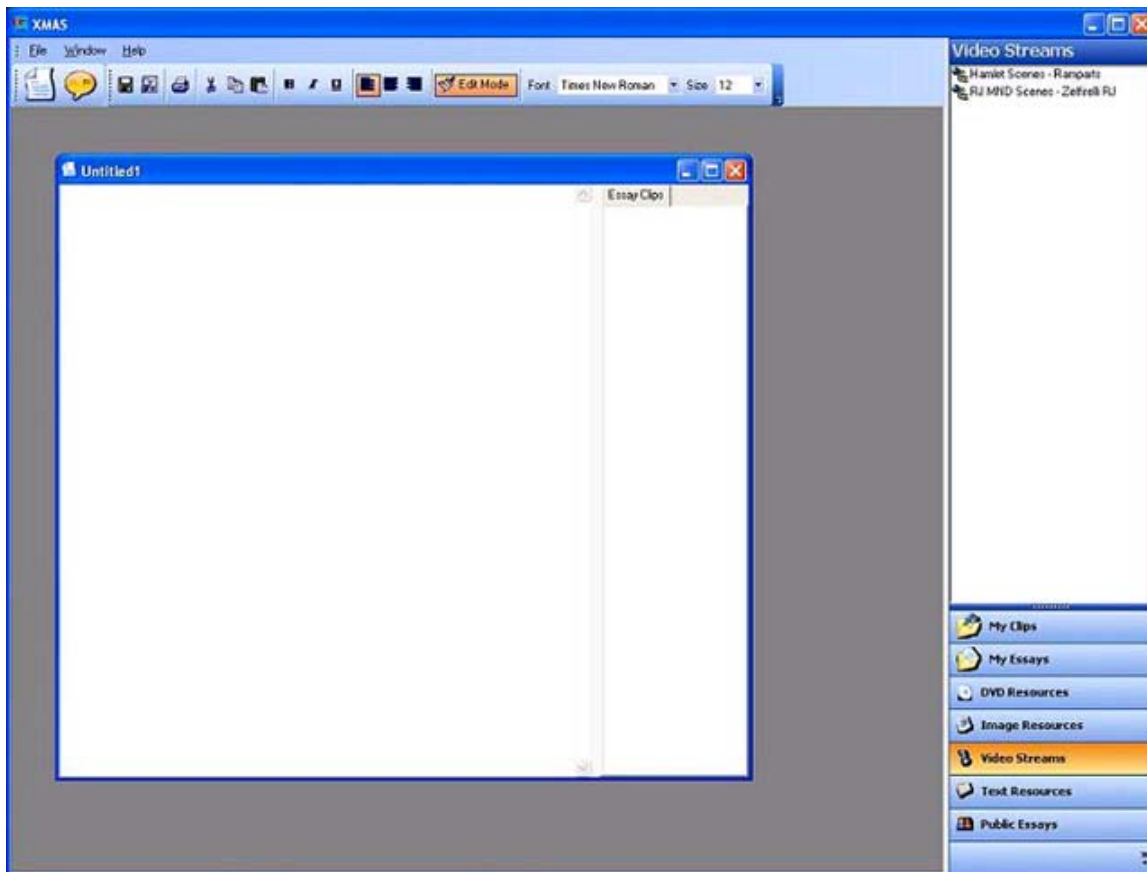
8 – Once you have designated the clip you intended, click “Save As.” (If you already have a saved clip loaded in the Video Display window, and you’ve made changes to the Start/End times or want to change your comments for that clip, click on “Save” to update the already saved clip.)

9 – A dialogue box will appear. Title your clip in the “Title” box and add your comments to the “Comment” text field. When you are done, click “Save.” (Clips that you save can be found in the Sidebar when you click on the “My Clips” button.) After a clip is saved, it is immediately loaded into the viewer along with the comments you added.



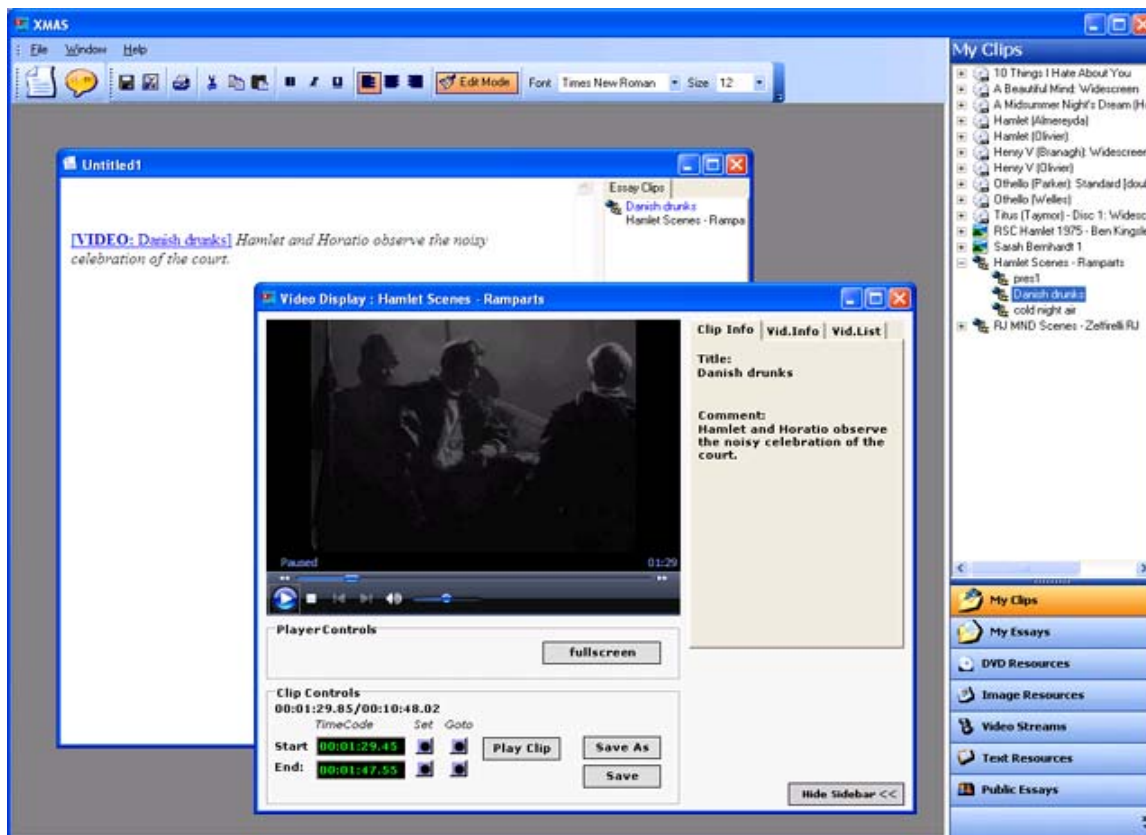
## Writing An Essay

10 – Open a new essay by clicking on the Essay icon. If opening an existing essay, click the “My Essays” button in the sidebar and then double-click on the title of an essay. Again, be patient. Sometimes the “Essay” window takes a minute to open.



11 – Save your essay (click on Floppy Disc icon) and name appropriately.

12 – You may add clips to your essay. Just click and drag clips them from "My Clips" into your essay window.



13 – You can add your own prose to your Essay describing the significance of the clip you have inserted and developing an argument about the film in question. Your prose can be formatted using the editing tools available in the Essay toolbar.

14 – Clips can be deleted from your essay just as prose can. Even if you erase clips from your Essay, they will stay in "My Clips" so they can be used another time. (If you delete clips, which have been added to an essay, from "My Clips", the essay will not be affected.)

To playback clips from the Essay, you have 2 options:

option 1) Click on the "Edit Mode" button to deselect it, which switches you out of edit mode, and click on clip link. (Remember to click on the "Edit Mode" button again to modify essay text or add more clips.)

option 2) Double-click on the desired clip in the "Essay Clips" list on the right-hand side of the essay window (Right-click on a clip in the list to see other options in the popup menu.)

15 – Remember to save your essay often. You should make a habit of printing a hard copy of your essay work as backup. Close the XMAS program when you are done.

**For additional support, contact:**

**[xmas-support@mit.edu](mailto:xmas-support@mit.edu)**