

**Massachusetts Institute of Technology
East Campus Urban Design Study**

MIT Community Forum

**Mack Scogin Merrill Elam Architects
Michael Van Valkenburgh Associates
Greenberg Consultants
HR&A Advisors
VHB
Atelier Ten**

11 December 2013

**Massachusetts Institute of Technology
East Campus Urban Design Study**

Cambridge Community Forum

**Mack Scogin Merrill Elam Architects
Michael Van Valkenburgh Associates
Greenberg Consultants
HR&A Advisors
VHB
Atelier Ten**

12 December 2013

Presentation Agenda

- 1. Highlights of what we heard from you:**
 - a. November 7 - MIT Community Forum**
 - b. November 14 - Cambridge Community Forum**

- 2. 4 Critical Design Issues:**
 - a. Eastgate Site**
 - b. Gateway(s)**
 - c. Connections**
 - d. Public Space / Mixed Use**

- 3. Discussion of Critical Design Issues**

Feedback from MIT Community Forum November 7, 2013

Kendall Square East Campus Gateway(s)

- Better connect MIT with Kendall Square
- Transparency and activity at street level
- Open up ground floors on Main Street to public access
- Need residential to keep area alive
- Need things that stay open late – theaters, movies
- Grocery store

Connections/ Public Space/ Vibrancy/ Permeability

- Better access to the Charles River
- A pedestrian plaza to enhance actual Kendall Square
- Do not turn back to the city, integrate, overlap campus and city
- Remove surface parking lots
- No more 'dead ends'
- Winter gardens, internal public areas
- Integrate with development plans for surrounding areas like Volpe

MIT-ness

- Innovation, hands on research, transparency
- Space for MIT entrepreneurs to connect with industry and other students
- Innovation Center accessible to community
- Diversity and serendipity that brings 'geeks' together to create stuff to change the world
- Lots of meeting space, tables, green wall-up, good cafes a great catalyst
- MIT Museum – move to Kendall from current hidden location
- Extend the Infinite Corridor
- More space for students across all schools to collaborate, work together, explore ideas

Feedback from Cambridge Community Forum November 14, 2013

Kendall Square East Campus Gateway(s)

- Where exactly is Kendall Square?
- Improve link to MIT from T stop
- Improve T Station Headhouse
- Work with MBTA to improve service
- Keep long term plans for circumferential transit in mind
- Consider rotary at Main and Broadway
- Strongly define Main Street with 'communal' uses – retail for student and neighbourhood use
- Great place for grocery store
- Need porous edges to Main Street, new public spaces, life in the evening, movie theaters etc.
- Performance areas with backstage workshops

Housing and Vibrancy

- Need people around nights and weekends for retail viability
- Need housing for grad students, post docs, and junior staff
- Housing diversity – affordable, middle income

Connections/ Public Space/ Permeability

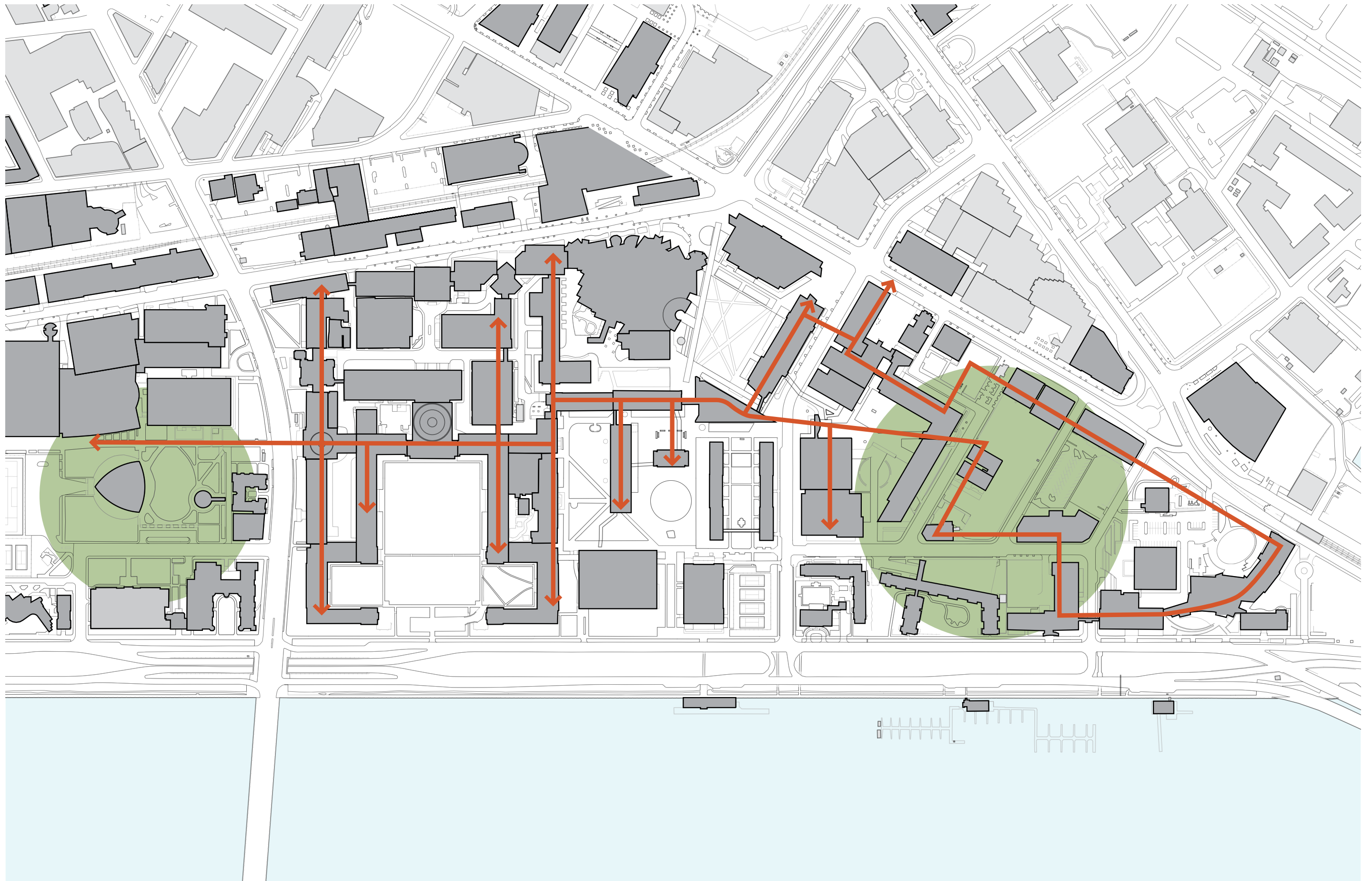
- Activate path from Kendall Square to River
- Enhance open space connections to River
- Revitalization of Memorial Drive
- Conversion of median into working landscape
- Partnerships are key in rethinking surrounding infrastructure
- Look to reduce auto impacts, more pedestrian spaces

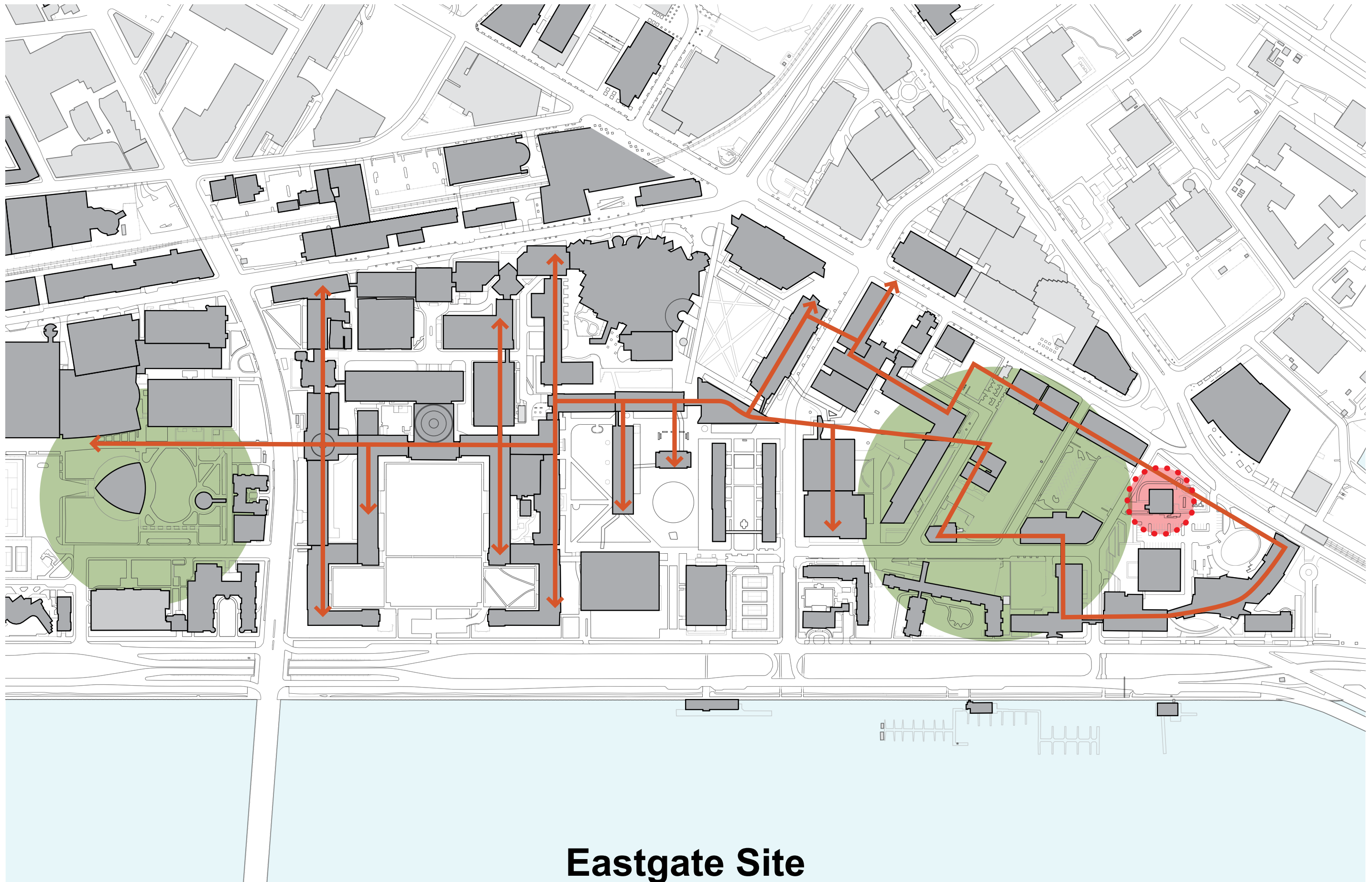
Environment/ Sustainability

- Leadership on environment
- Storm water, green infrastructure
- Tree canopy enhancement, green streets
- Link with Sub Watershed Boundary of the Charles River
- Modify street grid, orientation to the River and southern exposure

MIT-ness

- Highlight MIT's unique successes
- Celebrate high tech leadership and accomplishments
- True MIT-ness is figuring out big ideas and solutions

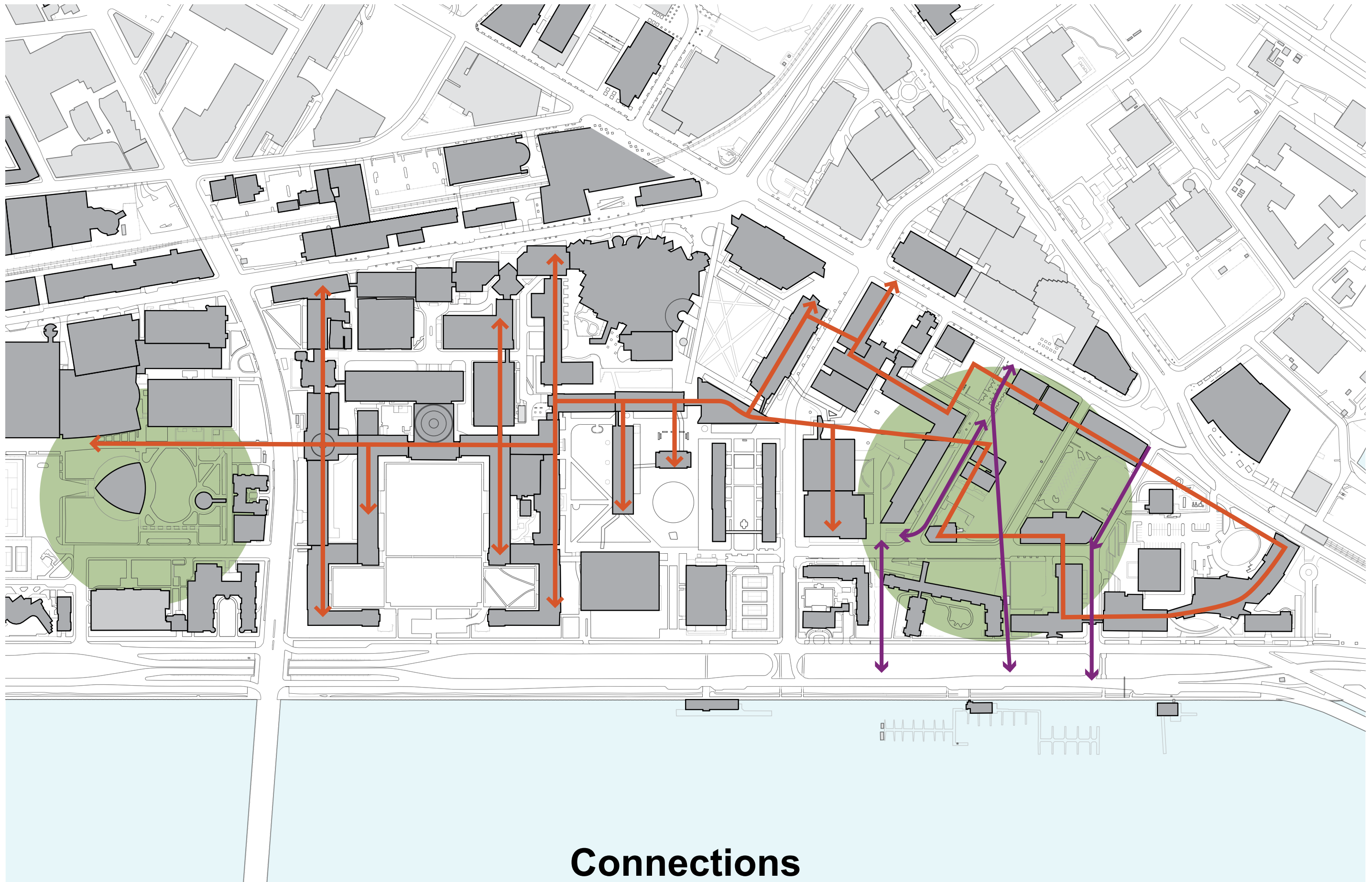




Eastgate Site



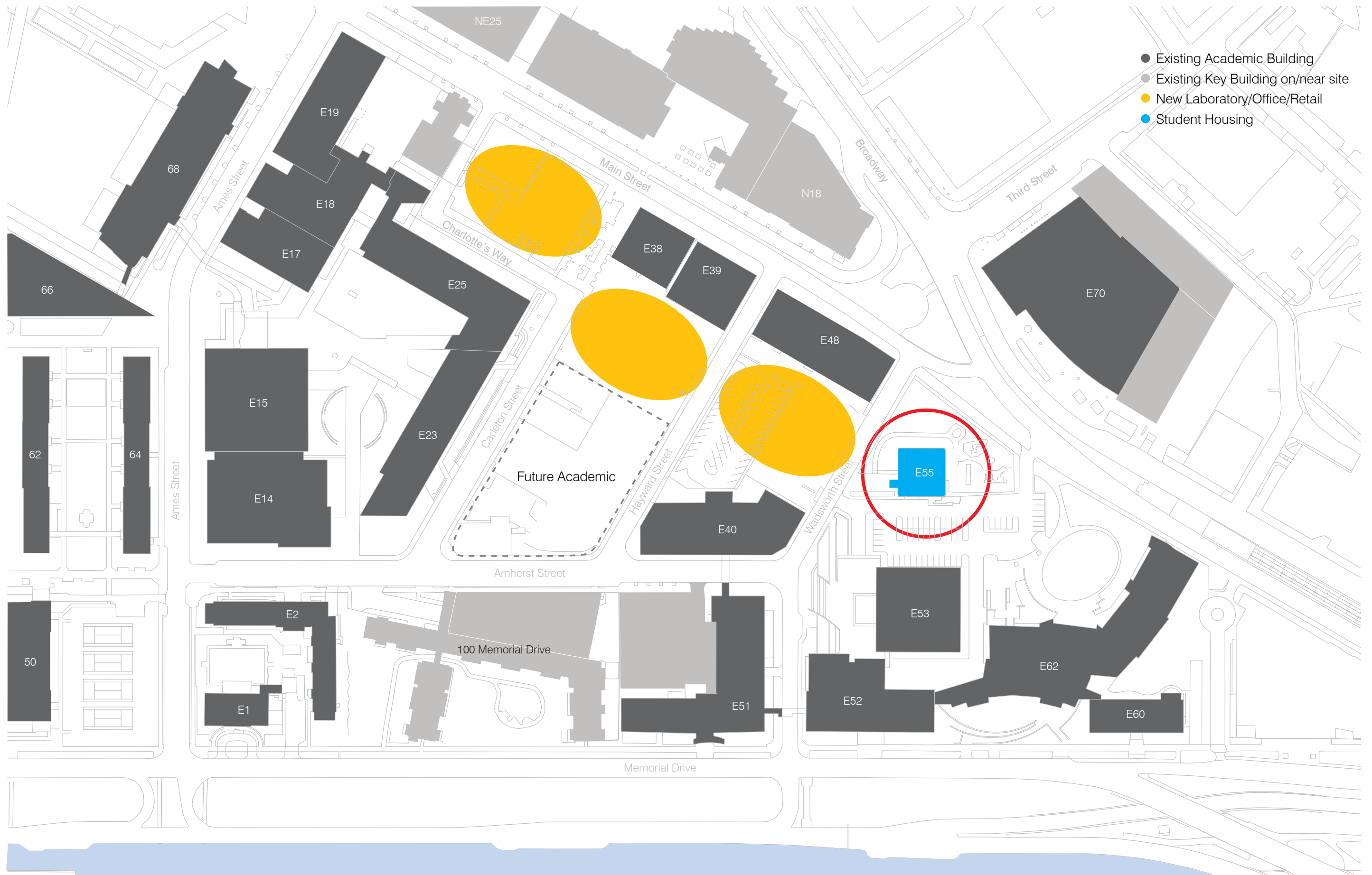
Gateway(s)



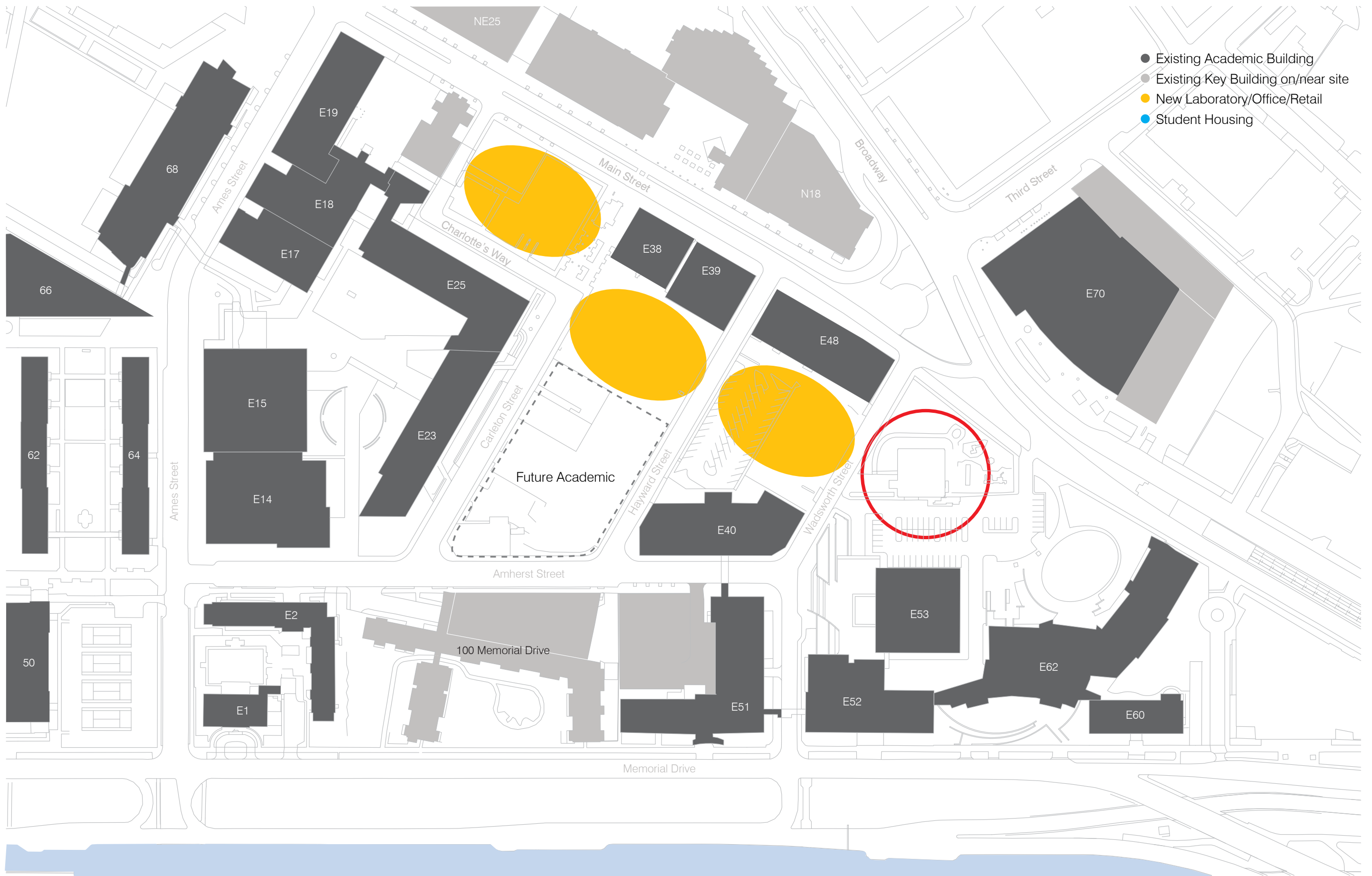
Connections



- Existing Academic Building
- Existing Key Building on/near site
- New Laboratory/Office/Retail
- Student Housing



- Existing Academic Building
- Existing Key Building on/near site
- New Laboratory/Office/Retail
- Student Housing



4 Critical Design Issues
Eastgate Site







4 Critical Design Issues
Eastgate Site



4 Critical Design Issues
Eastgate Site



- Existing Academic Building
- Existing Key Building on/near site
- New Laboratory/Office/Retail
- Student Housing



Existing Conditions



Existing Conditions











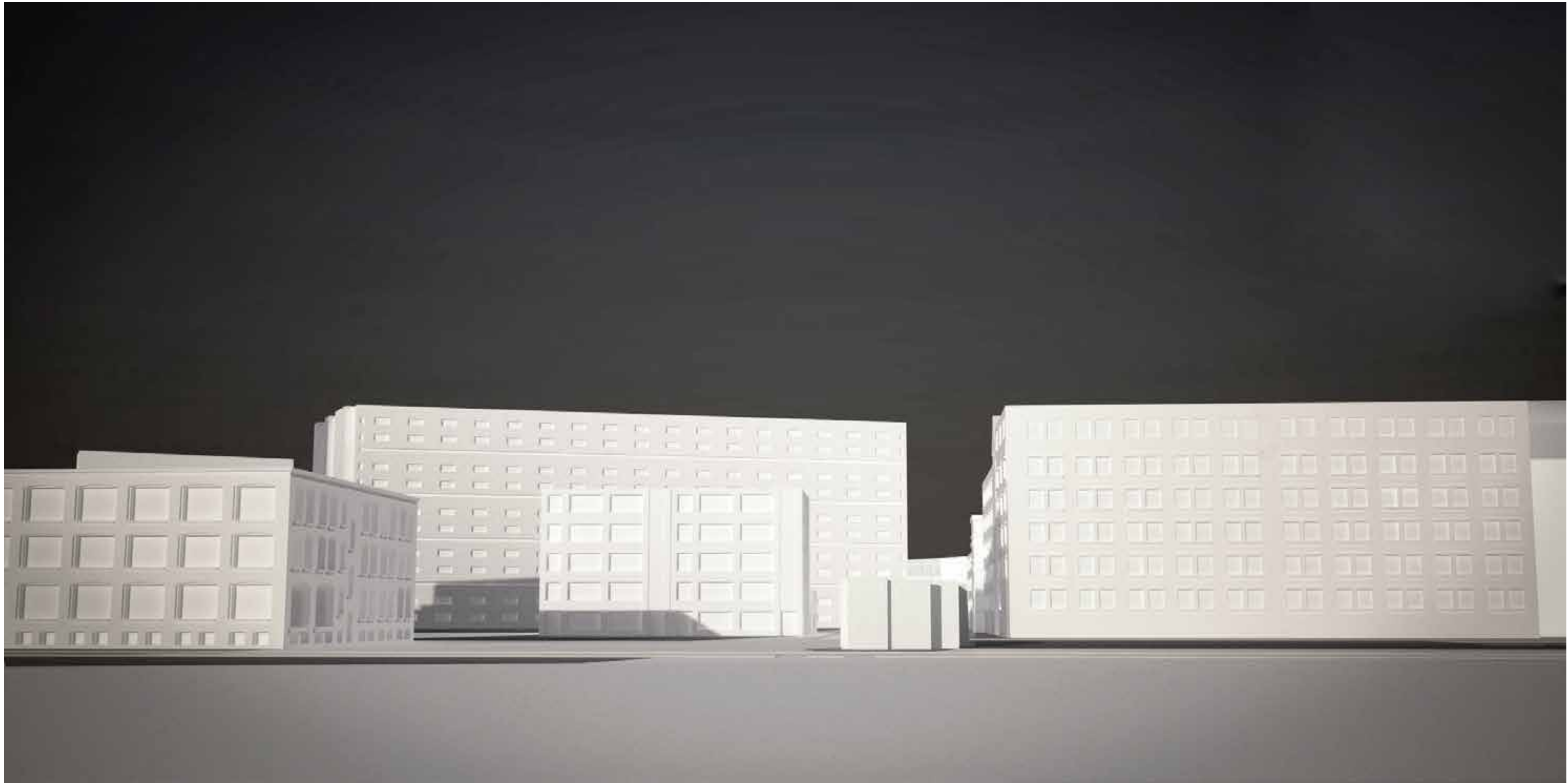




















- Public Space
- Temporary Public Space
- Existing Academic Building
- Existing Key Building on/near site
- New Laboratory/Office/Retail

4 Critical Design Issues
Connections



- Public Space
- Temporary Public Space
- Existing Academic Building
- Existing Key Building on/near site
- New Laboratory/Office/Retail

4 Critical Design Issues
Connections



- Landscape Types**
- Plaza
 - Yard / Common Spaces
 - Garden
 - Connective Corridor
 - Landscape View
 - Hybrid Landscape

4 Critical Design Issues
Public Space - Landscape Types

Plaza



Plaza



Plaza



Common Space



Landscape View



Landscape View



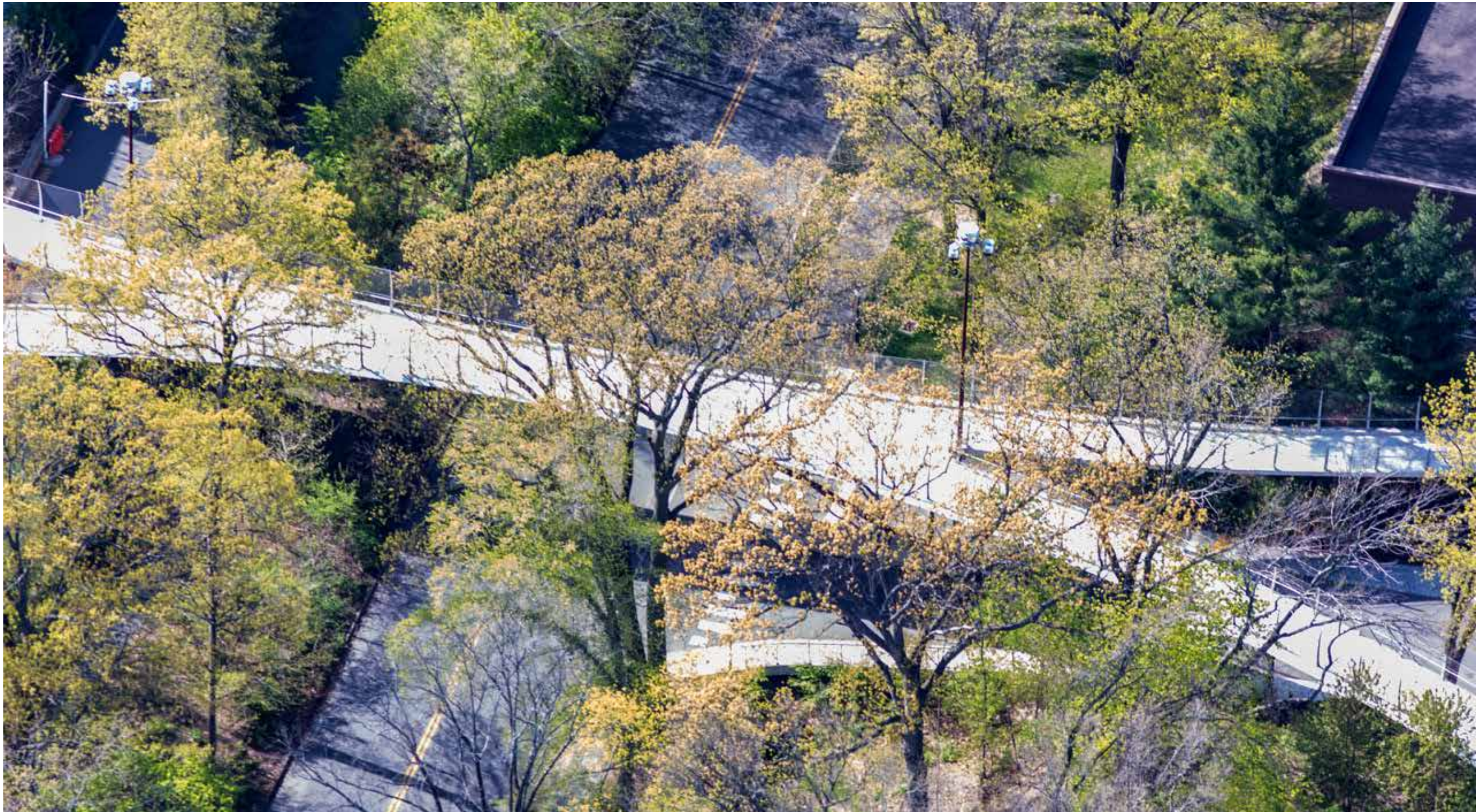
Landscape View



Connective Corridors



Connective Corridors



Hybrid Landscapes



Hybrid Landscapes



Hybrid Landscapes

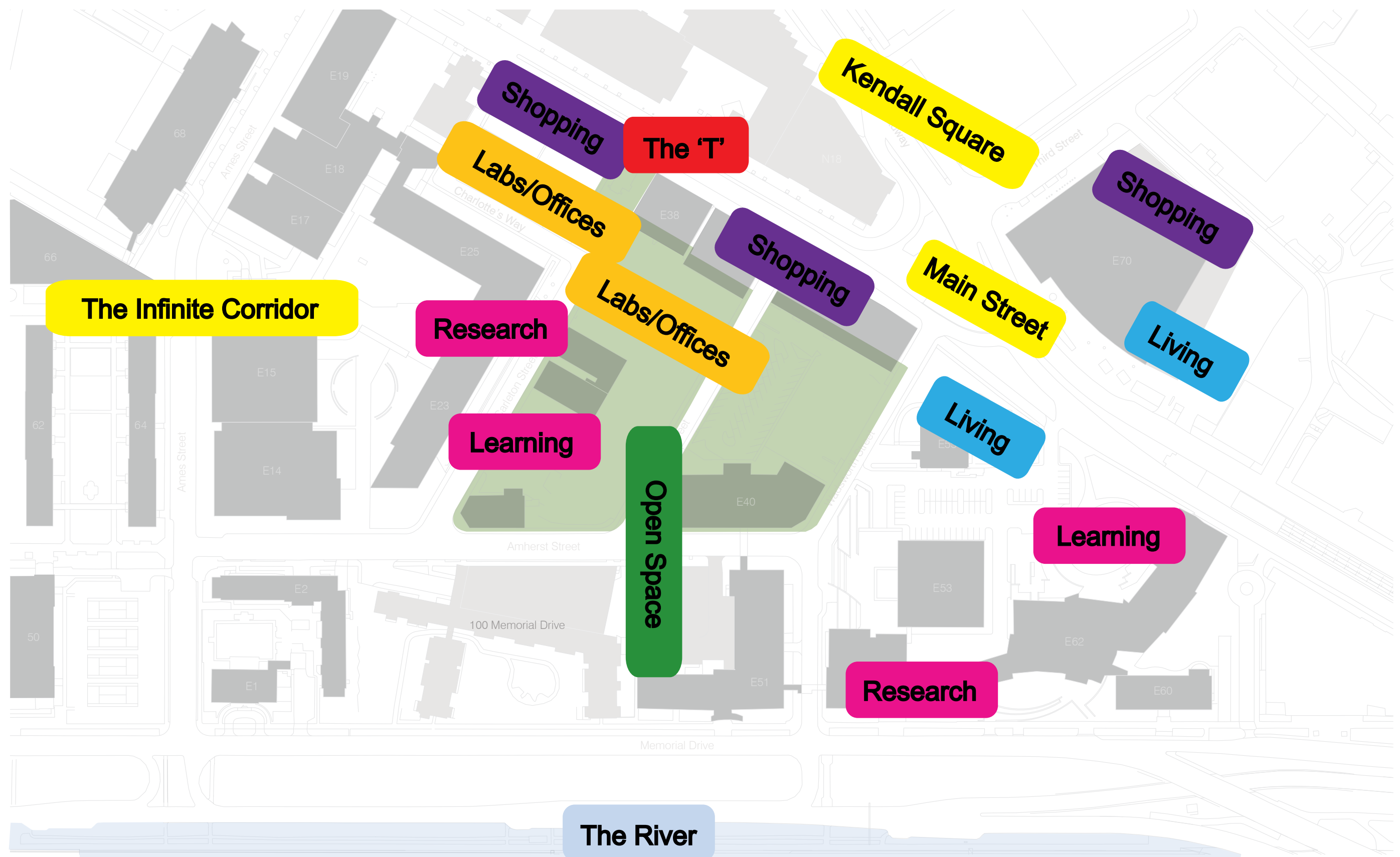


Cultivating the synergistic DNA of Kendall Square



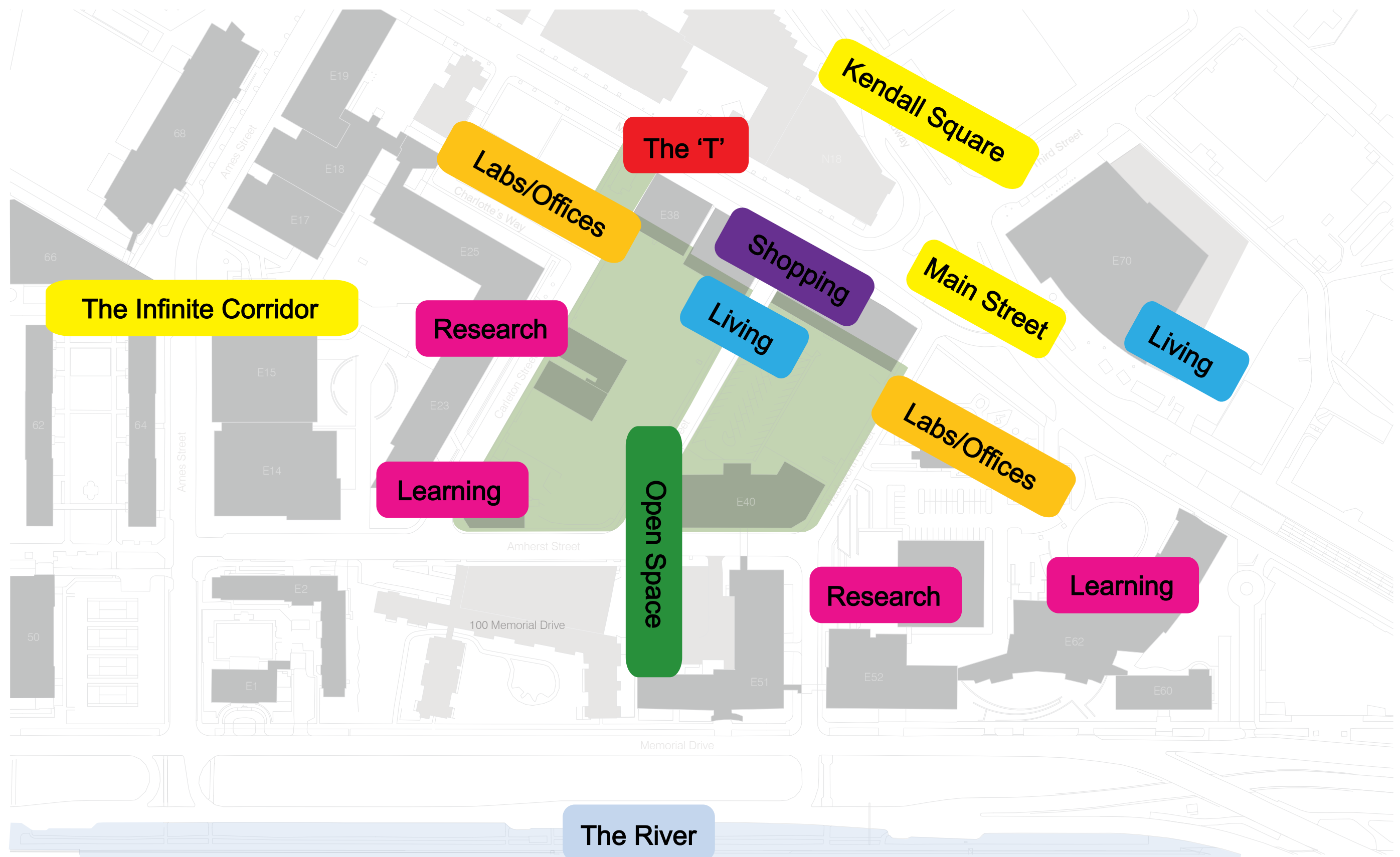
4 Critical Design Issues
Mixed Use

Cultivating the synergistic DNA of Kendall Square



4 Critical Design Issues
Mixed Use

Cultivating the synergistic DNA of Kendall Square



4 Critical Design Issues
Mixed Use

Eastgate Site

Gateway(s)

Connections

Public Space / Mixed Use