

IMECE2004-62599

LIFE CYCLE ANALYSIS OF CONVENTIONAL MANUFACTURING TECHNIQUES: SAND CASTING

Stephanie Dalquist

Massachusetts Institute of Technology

Timothy Gutowski

Massachusetts Institute of Technology

ABSTRACT

Conventional manufacturing techniques have not been subject to much scrutiny by industrial ecologists to date. Many newer techniques and products draw more attention as they rise quickly from research to global scales, amplifying their environmental consequences. Despite the presence of new technologies and increased overseas production, casting activity continues to have a strong presence in the US, and represents a stable component in the national economy. Data from the US government, US industry groups, and UK mass balance profiles facilitate an understanding of sand casting and comparison across manufacturing processes. The figures in the US and UK are similar in terms of diversity of metals (where the US is 72%, 13%, 10% and the UK 76%, 13%, 8% for iron, aluminum, and steel, respectively), energy per ton of saleable cast metal (10.1 and 9.3 million Btu/ton in the US and UK), and overall emissions, with notable similarities in benzene and particulate emissions. One notable discrepancy is in sand use, where the US sends to waste 0.5 tons of sand per ton of cast metal, whereas the UK sends 0.25 tons to landfill.

INTRODUCTION

Although we live in an age where new technologies demand exotic manufacturing techniques, most products still require traditional manufacturing processes and carry along their inherent environmental ramifications. Developing countries entering mass production, in particular, are taking on an increased environmental burden in manufacturing.

Complex products like semiconductors (Williams, 2002) and cars are frequently subjected to life cycle assessments as a part of or in conjunction with environmental impact analyses. For conventional processes like sand casting, such an evaluation is uncommon.

Although sand casting has reached a stable market size in the United States, international production is growing (Modern Casting, 2003). China alone increased shipments 60% over the years 1997 to 2002, and in 2002 shipped 17.8 million tons of cast metal. Global casting production showed a 3% overall

mass increase in 2002. Cast material requires substantial energy, often in the form of fossil-fuel generated electricity or direct firing of coke or natural gas. Most of this energy is used to melt the metal, but increasing quantities of energy and materials are required to meet customer specifications. The highest material demand, besides the metal forming the product, is the sand used to create the mold. Organic compounds are used as binders, and burned out as gaseous releases during mold formation. More organic compounds are used in cleaning and finishing.

In casting, like other sectors of private industry, there is little consensus on the magnitude of the impacts, in part due to the lack of published data. Some firms keep relatively good information, but publicly available aggregate data and sector analyses are limited to self-reported surveys from the DOE and EPA. The lack of evidence that the environmental impact is well understood or well addressed exemplifies the suitability of this sector and need for life cycle research.

SYSTEM BOUNDARIES: PROCESS MATERIALS AND ENERGY USE

The system boundary outlines the sand casting manufacturing process and the boundaries of this inventory. The resources considered (Figure 1) are the material and energy inputs and outputs for mold preparation, metal preparation, casting, and finishing stages and their subprocesses.

determining concordance between individual foundry data and reported data is an exercise of coincidence.

At least three gaps in the known literature on sand casting must be addressed. Two of these are in common with those which have not been addressed in semiconductors (Williams, 2002), demonstrating an issue in life cycle analysis which extends beyond this process. There is a noticeable lack of process data, like input and output materials. This is particularly true of the cleaning process and the components in and reactions of sand binders. Second, of the process data that does exist, no comparisons have been made between the self-reported numbers and experimentally-derived models. Finally, much of the data is self-reported. Addressing this issue is beyond the scope of this study, but critical in attaining confidence in the life cycle analysis of a process.

The manufacturing process (Figure 2) begins with the formation of a single-use mold from sand and binders, which hold the sand mold together. A lot of the sand comes from the sand reclamation process, where sand from previous molds gets reclaimed for use in new molds. Cores are also made at this point for parts that have internal cavities.

In the green sand casting process, molds are made from a mixture of sand, clay, water, and carbonaceous additives (e.g. bituminous seacoal, anthracite, or ground coke). About 85% of the mold (EPA, 1998a), by mass, is sand. The clay (4 to 10%) and water (2 to 5%) act as the binder system from which the mixture derives its strength. The carbonaceous additives are a very small component by mass, but they are needed to prevent the metal from oxidizing as it solidifies, particularly in ferrous castings. They burn off on contact with the molten metal, creating an assortment of hazardous air pollutants (HAPs).

Green sand casting is often accompanied by the use of chemical binding systems. Many parts require cores, internal cavities that must be strong enough to hold together as the metal flows in around it. Therefore, binders other than clay are used, including synthetic resins. Some of these binders have to be cured at high temperatures, though many others cure at room temperature over time or with gasification. The resulting core is harder and stronger than the green sand mold. A few foundries use chemical binder systems in molds, too, but this is uncommon because the green sand process is inexpensive, relatively clean, and flexible.

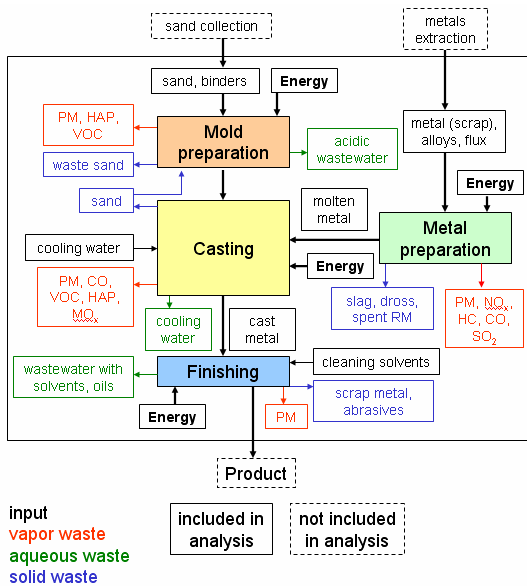


Figure 1. System boundaries of analysis and materials flow of sand casting.

Note that the manufacture of materials (e.g., extraction of metals or sand and water purification) is not within the system boundary. Also, equipment manufacture is not included. Furnace service life is long enough that manufacturing impacts are in the distant past and end-of-life impacts are yet in the distant future. Due to their long life, the environmental cost of machines is amortized over numerous products and the environmental impact is insignificant on a per part basis.

The limited body of literature available suggests greater concern about energy implications of sand casting than the material issues of sand and water consumption. The US Department of Energy (DOE) has published an energy and environmental profile of the casting industry, as has the US Environmental Protection Agency (EPA). Some sand casting foundries file a Toxic Release Inventory (TRI) with the EPA.

TRI applies to companies with manufacturing operations in Standard Industrial Classification (SIC) codes 20 through 39 – casting is in 33. TRI applies to companies with more than 10 employees that use 25,000 pounds of approximately 600 designated chemicals or use more than 10,000 pounds of any designated chemical or chemical category (EPA, 2004). 654 of some 2,800 US foundries were required to file a TRI in 1995 (EPA, 1998a). Of the remaining foundries, 33% had fewer than 10 employees, and the other 44% had more than 10 employees but did not use enough regulated material to be required to file.

Energy data is available from the Energy Information Administration (EIA) Manufacturing Energy Consumption Survey (MECS). Although the results are obtained from self-reporting questionnaires, the numbers tend to agree with other surveys and with approximations calculated from basic information. Even though sand casting is relatively uniform in concept, the myriad parameters complicate the derivation of accurate systematic estimations on a national scale from individual foundries and equipment. Consequentially,

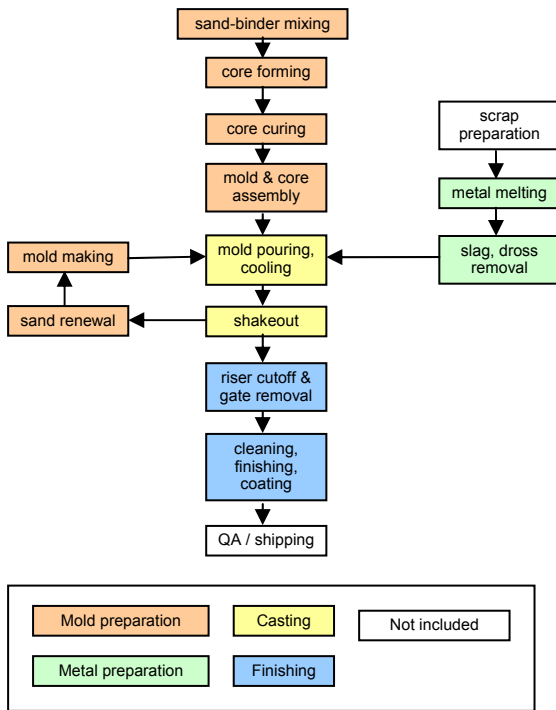


Figure 2. Process flow for a typical sand casting foundry. Adapted from Kotzin, 1992.

At the same time, the metal is being prepared for casting. The metal is melted in a furnace, and is sometimes shuffled to holding furnaces to keep it ready for production. Furnaces vary significantly in size, fuel, and efficiency. Sand casting can be used for almost any metal, but iron, aluminum, and steel are the most common. A high percentage of the metal feed is recycled material.

The molten metal is then poured into the mold. Depending on the metal and size, it will be hard enough for shakeout, the destruction of the mold around it, within five to 30 minutes. In shakeout, the sand mold is broken apart from the metal. This can be done with a simple hammer blow for many parts, but can also be done with vibration or high pressure water to remove the cast product. The sand is sent to reclamation, where it will be cleaned for use in another mold.

Even after shakeout, the product is not yet ready for the customer. Sprues, runners, flashing, and other excess metal are removed by cutting or grinding. Tumbling or high pressure water remove any remaining sand and smooth the surface finish. Additional improvements can be made to the surface before cleaning fluids or resin coatings are applied to protect the finished product.

ENERGY AND MATERIALS USE IN SAND CASTING

Sand casting is an energy intensive manufacturing process because it requires the melting and shaping of significant quantities of metal. According to EIA results (EIA, 2001) from self-reported questionnaires sent to foundries nationwide, US

foundries¹ used 216 trillion Btus in 1998, or 14.6 million Btu per ton of saleable casting. 1997 data (154 trillion Btu, 14.1 million tons of cast metal) gives only 11 million Btu per ton. The discrepancy, over such a short time frame and from the same data sources, suggests that an aggregate national value may not tell the whole story over the years.

Government survey data can be compared with published data from industry and researchers. The EIA results are comparable to typical industry estimates within the range of 13 to 15 million Btu per ton (Stevenson, 1995). Though a good approximation, it does not make distinctions on the effects of, for example, the market's shift towards lighter metals or the changing efficiency of production. Any differences between metals are also hidden, and turn up instead in the range of energy values for furnaces which are sometimes used for only specific alloys.

There are a limited number of material inputs in sand casting. Metals used for the final product are important, but cannot be processed without supporting materials like sand. Sand is used to make each mold, at a ratio of about 5.5 tons of sand to one ton of cast product. Complexities of the process arise through reactions when sand and binders are exposed to heat in the casting stage, releasing a wide variety of organics. A number of these products are hazardous and regulated federally by the federal Clean Air Act or Clean Water Act, and at state and county levels. Publicly available data on emissions are from government resources of aggregate statistics. More detailed relationships for some pollutants have been established in specific systems by government- (particularly EPA) and industry-sponsored experiments. Such experiments have resulted in correlations between HAP production and the type and concentration of binder. The particular reactions behind their formation are not explored as deeply as are their presence and relative quantities of formation in varying casting parameters.

Mold Preparation

Mold and core preparation are becoming increasingly benign in energy use with new developments. Green sand molds can be used only once, which may be considered inefficient compared to permanent molds, but they are also inexpensive and easy to make and change. Each mold made requires little energy, but doing it repeatedly can add up. Over recent years, increased use of no-bake binders, which cure at room temperature, has reduced energy requirements of mold preparation.

Green sand can be reused many times without significant treatment. It is filtered to remove binder remnants and fine-grained particles too fine for remolding. After each run, 10% of the green sand is removed from the foundry cycle (DOE, 1999). Green sand filtration produces lots of dust which has to be controlled and disposed of properly. For chemically bound sand, reclamation includes the removal of binder residue from sand before reuse within the industry, recycling to other industries, or landfilling. Thermal sand reclamation is the most common method used. Heat or infrared radiation can be

¹ Does not include die-casting. Does include losses in electricity generation.

applied to combust binders and contaminants (Heine, 1983). The application of heat is similar to what happens near the sand-metal interface during casting, and leads to the release to air of many of the same organic pollutants. These processes take, on the outside, 1 MBtu per ton of sand processed (EPA, 1995b), or approximately 5.5 MBtu per ton of metal cast (ETBP, 1998).

The mold preparation stage, in total, requires about 1.0-3.0 MBtu/ton saleable casting (DOE, 1999). The lower end applies to green sand foundries which use clay as a binder. The upper bound applies to chemically bound sand, which often requires high temperature or high pressure curing. This is in line with industry group analysis (CMC, 2002) which concludes that moldmaking and coremaking contribute about 20% of total energy use (Figure 3).

The preparation of molds and cores involves significant quantities of sand. Green sand is typically used for parts under 1 ton and is almost never used for making cores (DOE, 1999). Therefore, a foundry that does exclusively green sand casting is unusual. In a green sand process, the addition of water and clay, followed by mechanical “ramming” or compaction by pressing, are the only remaining steps to making a mold. A foundry that uses chemically-bonded sand, where ramming is uncommon, typically uses less energy in making the mold, but this savings is made at the expense of increased pollution from chemical binders.

When greater mold rigidity is required, binders stronger than clay are added to the sand. The varieties of binders include furane binders, phenolic urethane binders, and phenolic ester binders (Donohoe, 2001). The choice of binder depends on the size and pressure of the process and the type of metal cast. Emissions from binders are usually associated with the casting stage, but curing in mold preparation releases pollutants (Table 1) from heat-decomposed and unreacted components. All of the pollutants listed are classified as HAPs, and must be reported to the EPA in the foundry’s TRI. Other pollutants like CO₂, H₂S, and NO_x are also associated with this stage.

	Benzene	Methanol	Phenol	Toluene	Formaldehyde	MMDI
Furane	•	•	•	•		
Phenol urethane			•		•	•
Phenol ester			•		•	

Table 1. Some pollutants associated with binders used in Mold Preparation. MMDI is an acronym for Monomeric Methylene Diphenyl Diisocyanate. Sources: DOE, 1999, Donohoe, 2001, and LaFay and Neltner, 2002.

A lot of the sand used in molds comes from molds in previous runs that have been broken down and treated. However, heat reclamation changes the properties of the sand over time, eventually preventing its reuse in further molds. The 10% sand

loss is not insignificant; each ton of metal cast in the US requires about 5.5 tons of sand, of which approximately half a ton is disposed of.

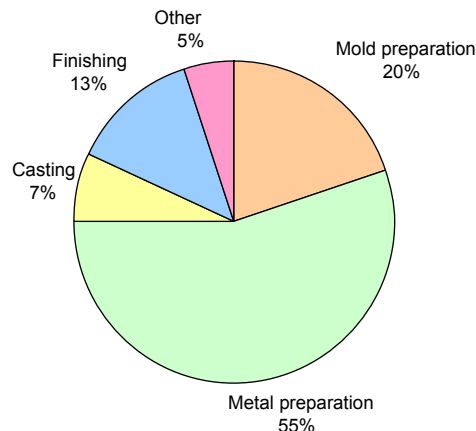


Figure 3. Energy requirements by stage. The total energy requirement is around 10 MBtu/ton, but varies by metal and furnace type.

Metal Preparation

In any foundry, the melting of source metal is the most energy-intensive part of the process. EIA MECS results (EIA, 2001) show that 55% of foundry energy use is in process heating. However, energy requirements and therefore environmental impact vary greatly among furnaces, which differ in size, age, and fuel source (Figure 4). The large share of natural-gas-fueled furnaces reflects their low energy costs. Coke requires more energy per ton of metal and has greater emissions. In today’s environment, it plays a less important role in the foundry than it has in the past. Electricity use is hard to interpret, because the data includes electricity used in other parts of the process and supporting activities within the foundry.

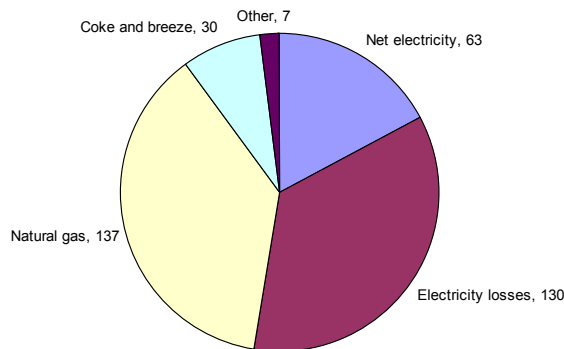


Figure 4. Foundry energy consumption by fuel in trillion Btu. Source: EIA, 2001.

There are five types of furnace commonly used in sand casting foundries. A foundry will choose a furnace type based on capacity, alloy mixture, available fuels, and capital cost. *Reverberatory furnaces* use wall mounted burners to radiate

heat from the refractory wall to the metal inside. Electric reverberatory furnaces are available, but are primarily used as holding furnaces. The *electric arc furnace* (EAF) is circular, with movable electrodes mounted in the roof. Once charged, the electrodes are lowered to the surface of the metal and an arc is struck to provide radiative heat for melting. *Cupolas* consist of a vertical cylindrical steel shaft with counterflow heat exchangers. They are traditionally fueled by coke but cokeless cupolas, powered by natural gas or electricity, are becoming more common. The *electric induction furnace* has a metal coil structure in the middle of the refractory through which alternating current is passed, creating a magnetic field. The magnetic field induces current on the metal surface and conducts heat throughout the refractory. Induction furnaces are increasingly used in aluminum foundries, where they minimize metal loss and oxidation (Burditt, 1989). *Crucible furnaces* are the oldest furnaces. The crucible has a steel shell with a clay-graphite lining. In production, crucibles are only used for low-melting temperature (i.e., non-ferrous) alloys, and they are typically smaller than other modern furnaces.

Furnaces for commercial casting are 0.5 tons on the small end and upwards of 150 tons at the largest. The wide range in energy requirements (Table 2) is partly explained by equipment, like reverberatory and electric arc furnaces, which can span the entire range of furnace sizes (Gale Group, 2004). Another contribution to the range is the variety of metals cast in the US. Cupolas are only used for melting iron, so their energy characteristics are more narrowly defined. Other furnaces can be used for a variety of metals, for example, iron and aluminum, whose heat capacities vary by over a factor of two.

Fuel Source	Furnace Type	MBtu/ton
Fuel-fired	Crucible	1.8-6.8
	Reverberatory	2.5-5.0
	Cupola (coke)	5.8
	Cupola (NG)	1.6
Electric	Induction	4.3-4.8
	Electric arc	4.3-5.2
	Reverberatory	5.2-7.9
	Cupola	1.1

Table 2. Energy requirements at the foundry in MBtu/ton saleable cast material for foundry furnaces. Source: DOE, 1999.

Metal and fuels are the key inputs in metal preparation. Sand casting uses a large quantity of scrap metal as feedstock – scrap is used in anywhere from 50% (aluminum (OIT, 2000a)) to 85% (ferrous (CMC, 1998)) of castings. Undesirable outputs (Table 3) are related to the combustion of fuels, and therefore include large amounts of particulates and carbon monoxide (CO), along with smaller amounts of SO₂ and VOCs. The emissions characteristics are tied strongly to the choice of furnace, which is in turn correlated with the process metal. The increasing electrification of both ferrous and non-ferrous furnaces (Burditt, 1989) suggests reduced environmental impact over the coke-fired furnaces of older foundries.

	PM	CO	SO ₂	VOC
Fuel-fired Reverberatory	2.2	unknown	n/a	unknown
Induction	1	~0	~0	unknown
EAF	12.6	1-38	~0	0.06-0.30
Coke-fired Cupola	13.8	146	1.2S*	unknown

Table 3. Approximate on-site emissions from various furnaces in lb/ton of metal. Does not include emissions from electricity generation or fuel extraction. Source: EPA, 1995b and EPA, 2001.

* S is the % sulfur in the coke.

Pollutant production can be significantly reduced through the use of pollution control technologies. Many foundries use a baghouse or scrubbers to clean air before releasing it from the foundry. The same amount of pollution is created, but it can be properly treated and disposed of instead of being released directly to the atmosphere.

The baghouse, a fabric filter, is commonly used to collect furnace emissions. They can be installed on all types of furnaces – almost all EAFs have them, along with 25% of induction furnaces and about one-third of cupola furnaces (DOE, 1999). Baghouses can also be used for pollution control at other points in the process.

Wet scrubbers bring a polluted gas stream in contact with liquid to absorb the pollutant. The contaminated liquid can be treated and properly disposed. They are less common in foundries than in other industries, and found almost exclusively on coke-fired cupolas. Low use rates can be attributed to the high capital costs of wet scrubbers and high treatment and disposal cost and flow rates for the scrubber liquid. Most foundry wastewater comes from wet scrubbers, which can have an output of wastewater as high as 3,000 gallons per minute in facilities with large cupola furnaces (EPA, 2001). Thus in a tradeoff for cleaner releases to air, the foundry now has to deal with the treatment and disposal of a large quantity of water.

The metal inputs are, of course, significant. Of the approximately 15 million tons of saleable metal cast each year, nearly three-quarters of it is iron. (Figure 5).

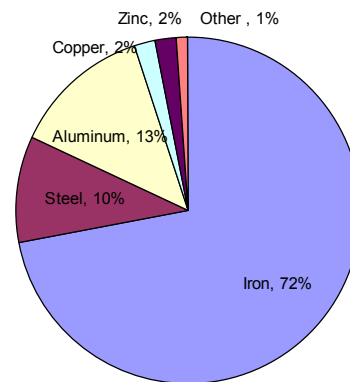


Figure 5. Cast metal distribution in the United States, measured by mass. Source: DOE, 1999.

Steel and aluminum are also widely cast, but are each only around 10% of the share of metals cast. Nonferrous castings are typically only used for products that require specific mechanical properties.

Casting

The pouring stage is less energy intensive than other parts of the process. Improvements here most need to be made in material releases, like those of dust and HAPs to air. Energy improvements can mostly be made in heat loss.

Once the metal is melted, it is transferred from the furnace to a pouring ladle, which holds anywhere between 100 pounds and 35 tons of metal (DOE, 1999). Heat loss can be substantial, and restricts the amount of time that the metal can be treated while in the ladle. The transfer by ladle is done by hand in small foundries, but can be automated for large-scale work. Most of these processes are powered by electricity or natural gas and require approximately 0.6 MBtu/ton (DOE, 1999).

The stage of pouring metal into the waiting mold is the leading source of hazardous pollutants in the sand casting process. Metal fumes come from the metal while in the ladles, and organic emissions occur when the metal comes into contact with the sand and binder. These emissions continue throughout the cooling process.

In general, emission factors for molds with cores are higher than for those without (NCMS, 1999). Molds with cores require additional binders in core preparation, and more commonly use phenolic binders. Phenolic binders substantially increase the emissions of phenol from incomplete conversion.

Benzene emissions have been a concern in foundry research. LaFay and Neltner (2002) derived experimentally a function of benzene emissions for a given casting system. It agrees well with other experiments which determine benzene emissions to be between 0.06 lbs/ton (Kauffmann and Voigt, 1997) and 0.05 lbs/ton (NCMS, 1999) over a variety of metals and binder systems.

Experimental benzene data can be scaled up to match national data fairly well. 1995 TRI results report 239,000 pounds of benzene emitted. By treating this as one representative foundry, the above results suggest this foundry produced 4.3 million tons of cast products, about 27% of the national total. In fact, 23% of U.S. foundries filed TRI in that year. The fact that not all TRI foundries reported benzene as an emission suggests that its creation is not uniform across the industry.

After the metal cools, the cast product is removed from the mold during “shakeout.” Collapsing the mold with vibrations produces significant quantities of dust and metallic particulates.

	Benzene	Formaldehyde
Green sand	0.0083	0.0039
No-bake	0.0053	0.008

Table 4. Average emissions factors of benzene and formaldehyde during shakeout in lb/ton of metal from a survey of Wisconsin foundries. Source: Lindem, 1996.

Shakeout emissions (Table 4) are related to the binder system. The two most common systems, Green sand and no-bake, have similar emissions but demonstrate the emissions tradeoffs between different technologies.

Finishing

Finishing stages of a cast part include grinding, heat treatment, and blowing. Again, the chemicals used in this stage are more of a concern than the energy. These processes remove sprues and runners and transform the cast surface to customer specifications. Combined, they require some 1 million Btu/ton of foundry energy (DOE, 1999). The Cast Metals Coalition (2002) reported Post Cast process energy as 7% of total energy costs.

The finishing stage brings the rough cast product to a stage which will be accepted by foundry customers. All products must have sprues and runners, which are used to funnel metal into the mold, removed. Most must be cleaned and have surface treatments performed. Cleaning the product can involve the use of organic solvents, abrasives, pressurized water, or acids, often followed by protective coatings. Although particle, HAP, and effluent pollutants are created in this stage, they are largely contained by filters and closed systems.

The cleaning stage removes extra sand from the surface of the part. Common techniques include vibrating, wire-brushing, or blast cleaning (DOE, 1999). These processes can create significant quantities of dust and metallic particulates. This is also true of finishing – using band saws and cutoff wheels to remove sprues, runners, and flashing. Emissions can be controlled with hoods and ducts which pass the particulates into scrubbers.

HAZARDOUS MATERIALS

Owing to the organics used in binders and cleaning, a number of hazardous materials are released during the sand casting process. Other releases from foundries include metals and metal compounds. Metal casting facilities report disposal and releases of toxic chemicals and a designated list of HAPs on the EPA TRI. The TRI provides a base understanding of the toxic materials used, though care should be taken in its generalization to the entire industry.

The use and disposal of foundry chemicals are regulated by the federal government under at least one of the following:

- i. Resource Conservation and Recovery Act (RCRA), which regulates management of solid waste, hazardous waste, and underground chemical storage.
- ii. Clean Water Act, which forms the basic structure for regulating discharges of pollutants into US waters. The most relevant sections are CWA§307 (Toxic and pretreatment effluent standards) and CWA§311 (Oil and hazardous substance liability).
- iii. Clean Air Act and its 1990 amendments, which were written to keep US air clean despite increasing industrialization and urbanization. The 1990 amendments set limits on how much of a pollutant can be in the air anywhere in the US.

Regulated foundry process chemicals (Table 5) also turn up in the TRIs and in the process mass balance.

	RQ	Code
Methanol	1	RCRA §3001
Phenol	1000	CWA §311(b)(4), CWA §307(a), RCRA §3001
Formaldehyde	1000	CWA §311(b)(4), RCRA §3001
Toluene	1000	CWA §311(b)(4), CWA §307(a), RCRA §3001
Benzene	5000	CWA §311(b)(4)

Table 5. Some federally regulated process chemicals and relevant statutes. RQ are reportable quantities in pounds per year.

The casting industry is challenging to model by TRI data alone. First, only 23% of foundries file TRI, and those that file are not necessarily representative of the industry as a whole. The small fraction is a result of the small size of the average foundry in a bimodal distribution. Fully 33% of U.S. foundries do not meet the 10 employee minimum needed to report TRI (EPA, 1998a) and of those that do, only some meet the use requirements.

Second, foundries reported 58 different materials as releases or transfers during 1995. The chemical most frequently reported was copper, which was reported by only 38% of those responding. Over half of the chemicals were reported by fewer than 10 foundries (EPA, 1998a). The wide variety of chemicals reported is a result of the myriad variations on the process specifications.

RECYCLED MATERIALS

On the surface, casting appears to be as materials intensive as it is energy intensive. The search for cheaper materials and the aversion to disposal have increased the amount of recycled material going through the manufacturing process over the years.

Up to 90% of sand can be reused in a green sand foundry after filtration for fine dust and metal particles (DOE, 1999). Chemically bound sand must be reused at much lower rates due to degradation from treatment between runs. Sand that is not reused within the industry is repurposed, primarily in road bases and asphaltic concrete (Ahmed, 1993 and Javed, et al., 1994).

The small amount of metal filtered from sand can be sent back to the furnaces with significant quantities of purchased scrap metal. Ferrous foundries obtain 85% of raw material as scrap, buying around 9 million tons of scrap annually (OIT, 2000b). Aluminum scrap concentrations may be even higher. Nationally, some 31% of ferrous products are recycled (EPA, 1996) and rates for aluminum are even higher, between 50% and 65%. The material and economic advantages are significant. Using iron scrap instead of primary iron saves around 100 MBtu of energy (de Beer, et al., 1998) over one year of US production. Non-ferrous energy savings add to

these advantages, since the use of scrap aluminum alone requires 5% as much energy as the extraction of new aluminum (OIT, 2000a).

INTERNATIONAL COMPARISON

Only one other group has attempted a mass balance of the foundry industry. Biffa, a waste management group in the United Kingdom, sponsored a study of the materials flow of casting in the UK. Data used in the Biffa study were collected from 89 representative companies in the UK, representing 18% of the country's 1.5 million tons (Modern Casting, 2003) of annual production. The energy data corresponds well to the figures from American foundries. Some more interesting comparisons can be made in the materials realm.

Energy

For each ton of saleable metal cast in the UK, around 9.3 MBtu of energy were consumed. This is a very close comparison to the numbers derived from United States statistics, though a little lower. The difference may be attributed to different energy sources (e.g., increased electricity use in the US may mean more losses in generation relative to plants not powered by electricity and therefore more energy per ton cast), different furnace technologies (where most energy is expended), or a non-representative sampling methodology.

Power sources in the US and UK do differ, especially in electricity distribution (Table 6).

The US uses approximately 10% more electricity in the foundry industry than the UK does. A modest increase in proportions of electricity use in the US (3%) would show up as a 10% increase when including losses, as seen in Table 6 (EIA, 2001). Although coal for coke is widely available in both countries, natural gas is preferred because of reduced emissions, higher melting efficiency, and lower heating and melting time (OEE, 2003).

	US	UK
Natural Gas	21.4%	38.8%
Electricity	58.5%	48.5%
Coke	18.9%	12.0%
Fuel Oil	1.2%	0.6%

Table 6. Power source distribution between the US and the UK, including losses in electricity generation. Sources: DOE, 1999, and Donohoe, 2001.

Materials

The supporting process materials in the UK are the same as in the US. Sand and water are still used in larger quantities than any other materials. The same metals are cast on both sides of the pond, and their relative proportions are not so different. Other individual chemicals are more difficult to compare, but categories like particulates and air emissions can be explored.

Similar though they may be, practices worldwide are not uniform. Evidence for this can be found in comparing sand landfill numbers between the two countries. In the US, 7 to 8 million tons of sand (or around 0.5 ton sand/ton cast metal) is landfilled annually from foundries, and sand comprises nearly 70% of foundry solid wastes (DOE, 1999). The same industry in the UK disposes of 383,000 tons of sand per year, or 0.25

tons sand for each ton of cast metal. Spent sand is 73% by mass of the solid foundry waste stream.

The foundry mass balance found that UK foundries use almost 2.1 million tons of water annually (Donohoe, 2001), or 1.5 tons of water for each ton of cast product. Though no comparable estimate was found for US consumption, it should be in the same range on a ton per ton basis because the prevalence of green sand casting (water binder), iron processing (cupola use and therefore wet scrubber use), and need for rapid cooling are similar in both countries.

Demand for the various cast metals does not vary between the two regions, either. Market share of metals in foundries is remarkably consistent (Figures 5 and 6)

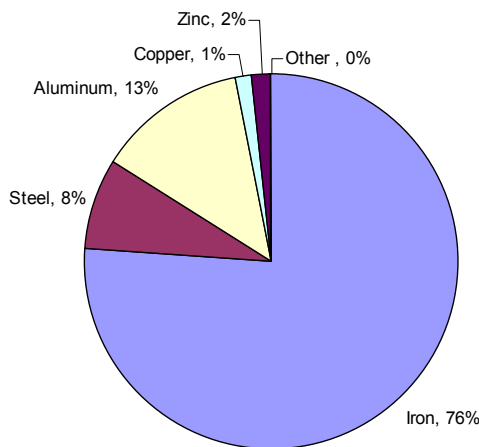


Figure 6. Cast metal distribution in the United Kingdom.
Source: Modern Casting, 2000.

A slightly larger share of the UK market is iron, as compared to the US. In the US, some of this has been replaced by steel, copper, or less commonly cast metals.

With similar results so far, it is not surprising that pollutant numbers such as particulates may correspond as well. The US and UK released 23,200 tons and 1,000 tons, respectively, of total particulates (DOE, 1999 and Donohoe, 2001) in 2000. The emissions correspond to rates of 1.42 and 1.33 lbs particulate per ton of cast metal. Similar emissions rates suggest that the US and the UK are at the same technological level of particulate pollution control in the industry.

Recycling

Sand recycling is common in the UK, as it is in the US. The Biffa profile found a wide range of sand recycling rates – the smallest foundries could not afford to treat and reclaim their sand, while large foundries with dedicated equipment recycled up to 95% of their sand. 82% of sand is recycled overall, and in disposal it represents 54% of the total foundry waste stream. Additional costs for transportation and disposal in the UK are a government-created incentive for foundries to recycle as much sand as possible.

Scrap metal purchase rates for aluminum are in line with American estimates, around 55% of consumed aluminum comes from scrap sources. A surprisingly low percentage of iron feedstock comes from scrap purchases, compared to the US. Only 33% of UK iron is scrap purchase, compared to 85% in the US. This discrepancy may be accounted for by the cost of scrap iron, the amount of iron in circulation which is recycled, and the prevalence of iron production facilities throughout the UK.

DISCUSSION

From start to finish in the process, decisions about the part and the process affect the magnitude of the environmental consequences of manufacturing. These two categories of fundamental choices can be considered in the design of new projects as well as the opening of new foundries or the modernization of older facilities.

Environmentally benign design parameters include minimizing the need for cores and potentially substituting increased machining for core-produced cavities. Where cores are still needed, the environmentally conscious designer will move away from hotbox processes, whose high temperature curing requires significant energy and produces HAPs. No-bake processes should often be a viable alternative. Another opportunity for emissions reductions could come from the automotive castings market, whose parts commonly require chemical binders. With a large share (35% (CMC, 1998)) of castings for the motor vehicle market, the auto industry could drive the development of new chemical binders to meet emissions regulations.

The metal used in each mold can be made with increased recycled content. One goal of the government-industry partnership in casting is to move to 100% recycled metal content (DOE, 2003), thus eliminating the dependence on imported stock.

Melting that metal is still the most energy intensive activity in the foundry. The energy and pollution control requirements suggest the need to re-evaluate the fuel source, furnace type, and pollution control method when modernizing foundries. The continued move away from coke as a foundry fuel will reduce emissions at the foundry level. Electricity should also be reconsidered to take into account the source of the electricity and therefore its losses and emissions in generation. Improvements can be made by choosing natural gas as a fuel for a cupola or reverberatory furnace. Baghouses should be preferred as a pollution control method, alleviating the foundry of the need for huge quantities of water for a wet scrubber.

Similar tradeoffs must be made in sand reclamation. It is important that the sand is reused, but its lifespan in the foundry should be increased, as should the opportunities for reuse outside of the foundry. Wet reclamation has far greater water needs than other methods, but lower emissions, and allows longer use of sand in the foundry. Thermal reclamation has low material requirements, but needs energy and creates organic and particulate emissions from small sand grains and binder residues. There is no direct metric to compare the two,

and the decision may realistically have to be made on the economic viability of each process.

Achieving these standards within the sand casting industry cannot be an instantaneous development. Foundries replace their equipment infrequently because of sheer size or limited capital, so changes requiring significant capital investment like new furnaces or a change in pollution control technology will come slowly. Customer selectivity – giving business to foundries seen as running a more environmentally conscientious business – can induce changes by demonstrating customer preferences for environmentally responsible business partners.

THE FUTURE OF CASTING

Like other manufacturing industries, foundries are looking towards the trends of the future to understand the challenges which will be faced in coming years. Trends in casting business structure, technology, and regulation will all have environmental consequences.

Offshore production will continue to increase. As recently as 2001, the US was the number one producer of cast parts by tonnage. US production has stayed constant, but production in countries like China and Mexico has increased rapidly in recent years (DOE, 2003). Overseas production is preferred because of low labor costs and reduced emissions standards and therefore costs of pollution control. China in particular still uses a large portion of virgin material in metal production (ISSB, 2004), increasing costs and the rate of depletion of natural resources.

Foreign competition, combined with the current business environment and economic situation, has driven the consolidation of businesses in the US, including foundries. Growing corporations must make choices with direct environmental consequences. Large foundries are also under greater environmental scrutiny than smaller foundries. The combined result may be greater environmental degradation in areas near large foundries, but reduced overall consequences as the larger foundries are forced to choose more environmentally benign manufacturing process parameters and equipment.

The process parameters are not entirely decided by the foundry. Customers are switching to lighter metals particularly for automotive applications (Modern Casting, 2003). In the next few years, the market share of aluminum can be expected to increase at the cost of steel parts.

Foundries in search of better pollution control technologies have already been a part of increased research on novel technologies like advanced oxidation (Cannon, et al., 1996 and Land, et al., 2002) and other non-incineration treatments of filtered emissions. Success of novel pollution control technology can eliminate the use of wet scrubbers and the large associated water needs.

This analysis was motivated by the opportunity to achieve a better understanding of a significant conventional process, but the major drive behind new casting technologies is tighter emissions regulations across the US. Although increased regulation is economically unfavorable in the competitive

global environment, foundries are subject to more national and local regulations each year. The biggest recent change has been the EPA Maximum Achievable Control Technology Standards, known as the MACT hammer. Section 112(j) of the Clean Air Act requires the EPA to develop a list of hazardous air pollutants that cause or contribute to death or serious illness – established in the 1990 Clean Air Act amendments – and to establish National Emission Standards for Hazardous Air Pollutants (NESHAPs) for each (Winek and Shannon, 2002). Deadlines to set rules for some categories passed in November of 2000, and the EPA's failure to set rules for 31 standards in some 59 source categories meant that cases were decided on a case-by-case "potential to emit" standard. This standard makes it much more difficult for foundries to be exempted from major source status, thus increasing their interest in improved pollution control technologies.

Needing to meet these regulations, foundries are also looking to form partnerships with government and academia to understand the consequences of current practices and the areas of improvement. For example, the DOE is working with foundries to create an Energy Footprint Study (DOE, 2003) to "measure the effectiveness of the processes and technology improvements in energy saving" across different fuel sources, furnace types, and alloys.

CONCLUSIONS

An analysis of the process exposes the areas where the most improvement can be made and the feasibility of industry goals for the coming years. The Cast Metals Coalition (2002) and the DOE (1995 and 2003) have set goals for both the energy and materials use of member foundries. Although energy is a majority of foundry costs, the goal for energy reduction by 2020 is only 3-5%. This is due in part to the long lifespan of furnaces, which consume over half of the energy used in a foundry. Only incremental improvements can be made without significant capital investments.

The materials goals are more ambitious, and reflect the inherent reusability of the materials streams within the foundry. They hope to "develop environmental technologies to achieve 100% pre- and post-consumer recycling, 75% beneficial re-use of foundry by-products, and the complete elimination of waste streams" (DOE, 1995). To hope to achieve these goals in two short decades exemplifies the already high state of material recyclability within the system and its involvement in recycling streams outside of the process (e.g., repurposing sand that can no longer be used in foundries and incorporating large amounts of scrap material in new castings).

Because sand casting continues to be a significant contributor to metal manufacturing techniques, its environmental impact must be better understood to aid in making choices between conventional techniques and newly developed manufacturing techniques. Although it is an energy- and materials- intensive process, newer processes for the same final product may prove to have a greater environmental impact. Furthermore, the casting industry deserves credit for its internal reuse, end-of-life reuse, and intake of recycled materials ranging from metals to sands. This analysis is just a

single step on the path to understanding the environmental consequences of a growing manufacturing sector.

ACKNOWLEDGMENTS

We would like to acknowledge the support of NSF Award # DMI 0323426, Dr. Julie Chen of the NSF, Jeffrey Dahmus of MIT, and the foundrymen of Metal Casting Technology, Inc., Modern Metals Foundry, Inc., and Lee Aluminum Foundry and Manufacturing, Inc.

REFERENCES

Ahmed, I. *Use of Waste Materials in Highway Construction*. Noyes Data Corporation, Park Ridge, NJ. 1993.

Burditt, M.F. Designs and Operation of Melting Furnaces Differ Markedly. *Modern Casting*. August, 1989. pp. 51-55.

Cannon, F.S., Dusenbury, J.S., Paulsen, P.D., Singh, J., Mazyck, D.W., and Mauer, J.D. 1996. Advanced Oxidant Regeneration of Granular Activated Carbon for Controlling Air-phase VOCs. *Ozone Sci., and Engr.*, vol. 18, pp. 417-441.

Cast Metals Coalition. *A Vision for the U.S. Metal Casting Industry: 2002 and Beyond*. May, 2002. www.oit.doe.gov/metalcast/pdfs/mcvision.pdf

Cast Metals Coalition. *Metalcasting Industry Technology Roadmap*. January, 1998. www.oit.doe.gov/metalcast/pdfs/roadmap.pdf

de Beer, J., Worell, E., and Blok, K. Future technologies for energy-efficient iron and steel making. *Annual Rev. Energy Environ*. 1998. 23:123-205.

DOE. *Beyond 2000: A Vision for the American Metalcasting Industry*. Office of Industrial Technologies, 1995. www.ciras.iastate.edu/IOF/PDF/mcvision.pdf

DOE. *Energy and Environmental Profile of the U.S. Metalcasting Industry*. September, 1999. www.resourcesaver.com/file/sectorstar/program_269.pdf

DOE. *Metalcasting: Industry of the future 2002 annual report*. February, 2003. www.oit.doe.gov/metalcast/pdfs/annual2002.pdf

Donohoe, J. *The Foundry Mass Balance Project*. Castings Technology International. 2001. <http://www.biffaward.org/projects/project.php?projid=189&PhaseID=1&SubProjectID=1>

Energy Information Administration. *1998 Manufacturing Energy Consumption Survey*. 2001. www.eia.doe.gov/emeu/mecs

EPA. *Compilation of Air Pollutant Emission Factors, Volume 1: Stationary Point and Area Sources*. AP-42, 5th edition. 1995a.

EPA. *Response to Comments Document: Land Disposal Restrictions--Phase IV:Final Rule Promulgating Treatment*

Standards for Metal Wastes and Mineral Processing Wastes; Mineral Processing Secondary Materials and Bevill Exclusion Issues; Treatment Standards for Hazardous Soils; and Exclusion of Recycled Wood Preserving Wastewaters. US EPA Office of Solid Waste. 1995b. www.epa.gov/epaoswer/hazwaste/ldr/ldrmetal/ph4rtc_1.pdf

EPA. Characterization of Municipal Solid Waste in the United States: 1996 Update EPA530-R-97-015, Washington, D.C. 1996.

EPA. *EPA Office of Compliance Sector Notebook Project: Profile of the Metal Casting Industry*. US EPA Office of Compliance. 1998a. www.epa.gov/compliance/resources/publications/assistance/sectors/notebooks/casting.html

EPA. *Sustainable industry: Metal casting industry profile*. EPA Office of Policy, Industry Sector Policy Division. 1998b.

EPA. "Emission Inventory Improvement Program documents, Volume II: Chapter 9, Preferred and alternative methods for estimating air emissions from secondary metal processing." 2001.

EPA. *Envirofacts data source: Toxics release inventory*. March, 2004. <http://www.epa.gov/enviro/html/tris/>

ETBP (Environmental Technology Best Practice) Programme. *Thermal Reclamation of Chemically Bonded Foundry Sand*. Environmental Management Centre. September, 1998, Sheffield, UK. http://www.emcentre.com/unepweb/tec_case/metal_28/recovery/r18.htm

Gale Group. Melting/refractories. *Foundry Management & Technology*. January, 2004.

Heine, H.J. Saving Dollars Through Sand Reclamation. *Foundry Management and Technology*. 1983, 111(5), p. 22-25.

Iron and Steel Statistics Bureau. *China – Raw Materials and Global Shortages*. February, 2004. www.issb.co.uk/pdf/200402_china.pdf

Javed, S., Lovell, C., and Wood, L. *Waste Foundry Sand in Asphalt Concrete*. School of Engineering, Purdue University, West Lafayette. Indiana Transportation Research Record. ASTM STP 1437, 1994. p. 27-34.

Kauffmann, P., and Voigt, R.C. *Empirical Study of Impact of Casting Process Changes on VOC and Benzene Emission Levels and Factors*. AFS Transactions, 1997, 105, p. 297-303.

Kotzin, E.L. *Steel Foundries: Air Pollution Engineering Manual*, ed. Buonicore, A.J. and Davis, W.T. Air and Waste Management Association, Van Nostrand Reinhold, New York, 1992.

LaFay, V. and Neltner, S. *Understanding Emissions in Green Sand Molding*. Hill and Griffith Company. 2002. <http://www.afsinc.org/pdfs/Emissions.pdf>

Land, J., Voigt, R.C., Cannon, F.S., Furness, J.C. and Andrews, J. Performance and Control of a Green Sand System during the Installation and Operation of an Advanced Oxidation System. *AFS Transactions*. 2002, vol. 110, p.705-715.

Lindem, S. Wisconsin's hazardous air emissions program. *Proceedings, 8th AFS Environmental, Health and Safety Conference*. American Foundrymen's Society, Inc. August, 1996.

Modern Casting. 34th Annual Census of World Casting Production, 1999. *Modern Casting*. December, 2000.

Modern Casting. 37th Annual Census of World Casting Production, 1999. *Modern Casting*. December, 2003.

National Center for Manufacturing Sciences. *Ferrous Foundry Air Emissions Study*. University of Alabama – Birmingham, 1999.

Office of Energy Efficiency. *Guide to energy efficiency opportunities in Canadian foundries*. Office of Energy Efficiency, Ottawa, Canada. 2003.
<http://oee.nrcan.gc.ca/cipec/ieep/newscentre/foundry/>

OIT Profiles and Partnerships. Aluminum Industry Profile. 2000a. www.oit.doe.gov/aluminum/pdfs/aluminum.pdf

OIT Profiles and Partnerships. Metalcasting Industry Profile. 2000b.
www.oit.doe.gov/metalcast/pdfs/metalcasting.pdf

Schroeder, R.L. The use of recycled materials in highway construction. *Public Roads* v.58 n.2, Autumn 1994, p.32-41.

Stevenson, J.P. Scrap and yield: An overview. *The Foundryman*. May, 1995, p. 178-181.

Williams, E. D., Ayres, R.U., and Heller, M. The 1.7 kilogram microchip: Energy and material use in the production of semiconductor devices. *Environ. Sci. Technol.* 2002, 36, p. 5504-5510.

Winek, Michael H. and Shannon, Maureen A. MACT Hammer Will Strike Industry. *Environmental Law Supplement to The Legal Intelligence and Pennsylvania Law Weekly*. April 8, 2002. v. XXV, n.14.