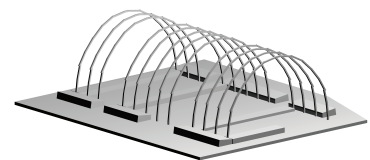
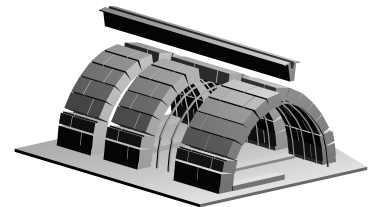
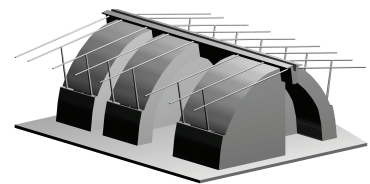
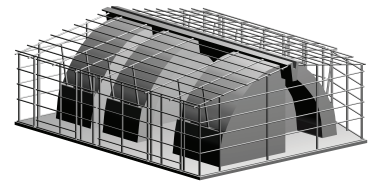
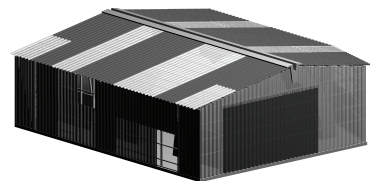


Straw-bale Vault House

Christopher Guignon

The basic concept is a highly insulated enclosure supporting an umbrella/parasol. Straw, an agricultural waste product, makes up the interior thermal boundary. Corrugated fibercement and PVC make up the external thermal boundary.



- Bamboo-reinforced Concrete Ridge Beam
- Corrugated Fibercement sheets
- Felt
- Bamboo (6cm)
- Stuccoed Strawbale
- Corrugated Translucent PVC
- Rammed earth Used-tire foundation
- Earthen floor

Corrugated Shell

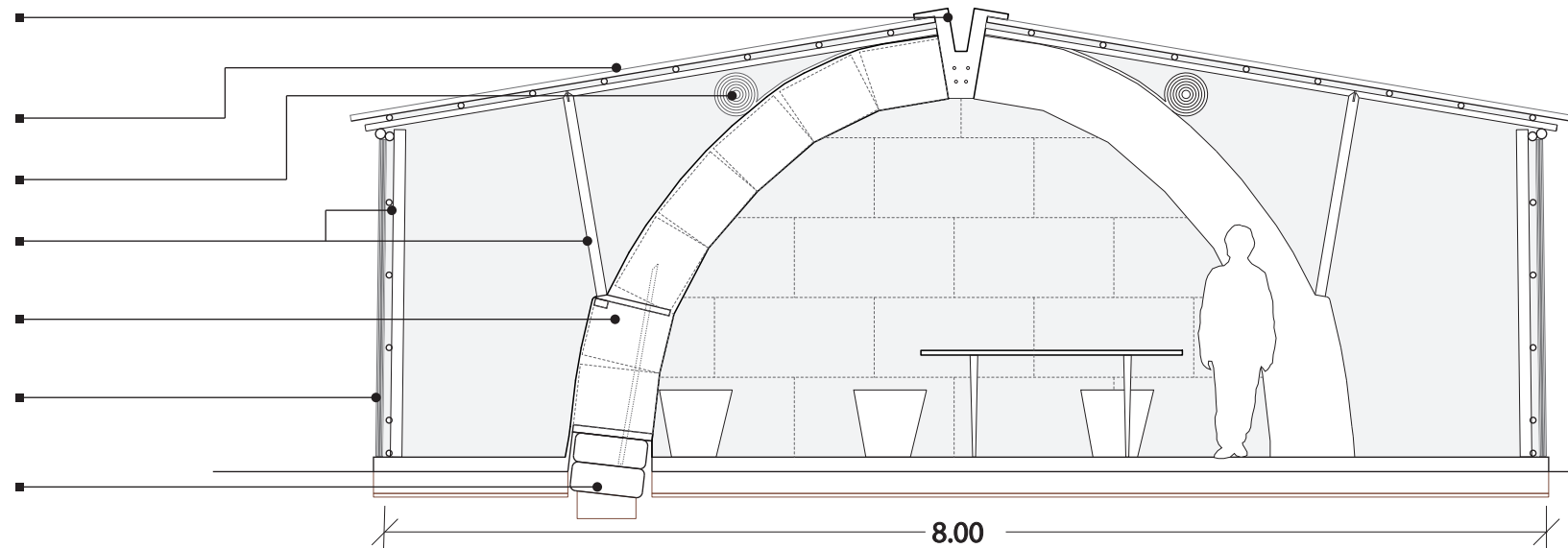
Bamboo Structure

Plastered and infilled vault;
bamboo roof structure

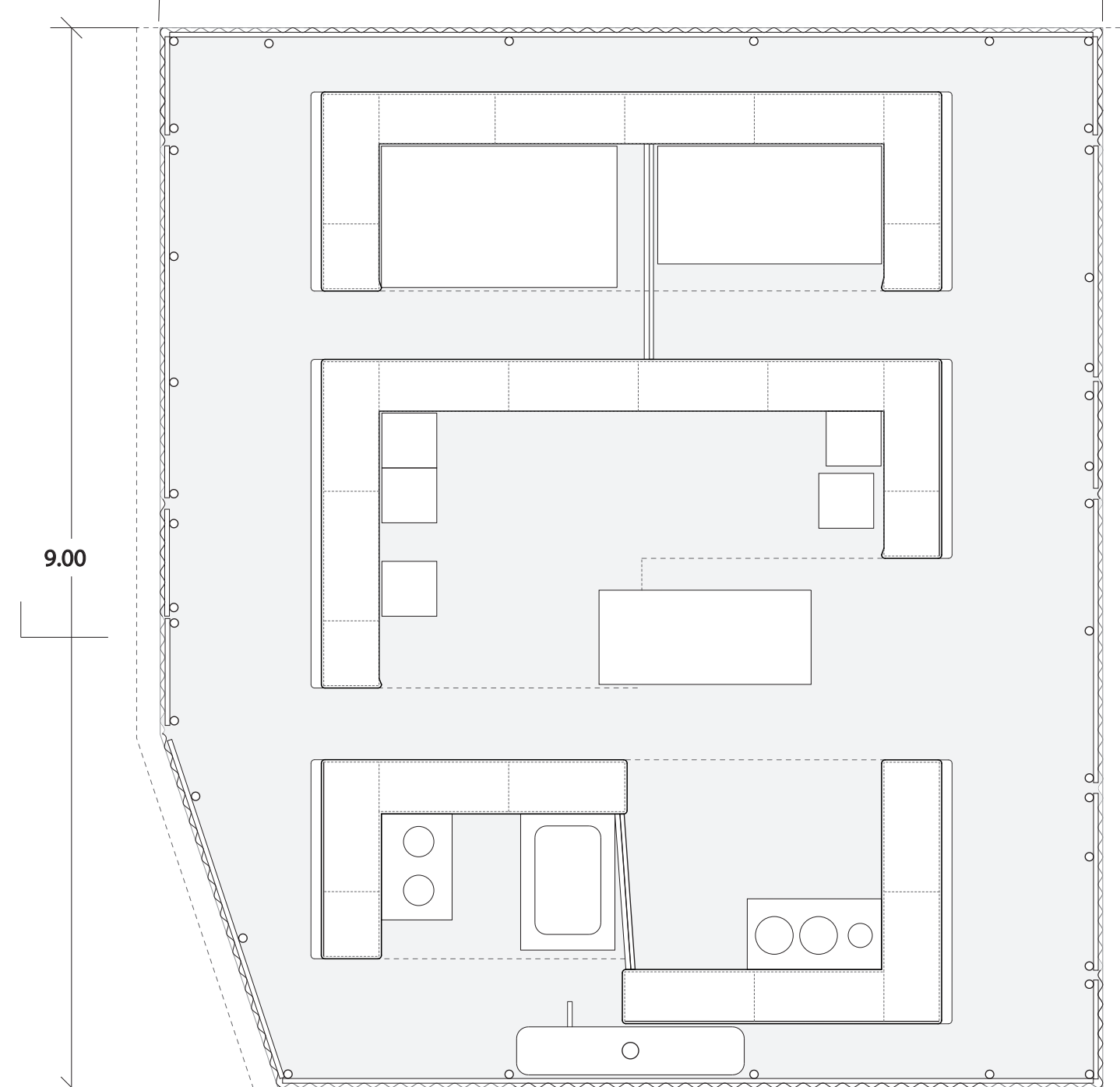
Straw-bale vault with
concrete keystone/ridge beam

Bamboo false work
and foundations

1:50



Section



Plan