

1K module house



Materials:

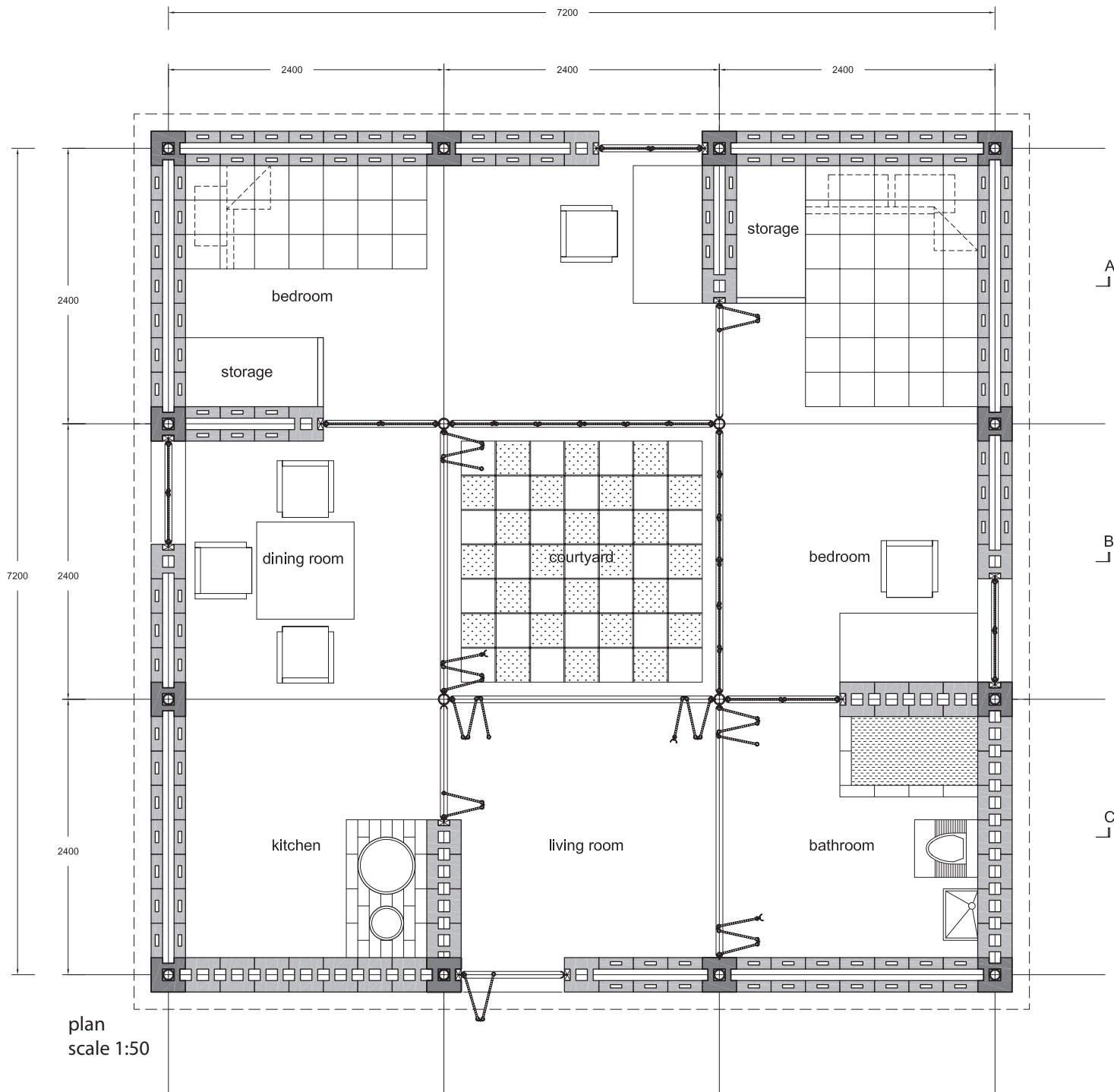
The module house mainly consists of 2 natural materials - earth block and bamboo. It is an exploration of the combination of the 2 which they are inter-supporting each other in terms of construction method, spatial definition, and prototyping.

Spatial:

Each module consists of solid earth block wall and light bamboo structure. The house is defined by the solid earth block, in which the flexible light bamboo structure opens up to the courtyard created by the 4 modules. Outside, you will only see 4 solid walls. Inside the module, you will experience the privacy created by the solid wall and the publicity by the bamboo structure. In the courtyard, it is enclosed by the light bamboo which open up to the sky. As a result, the concept of private and public spatial quality is well defined while at the same time, the flexible bamboo panels can create different spatial usages within the house.

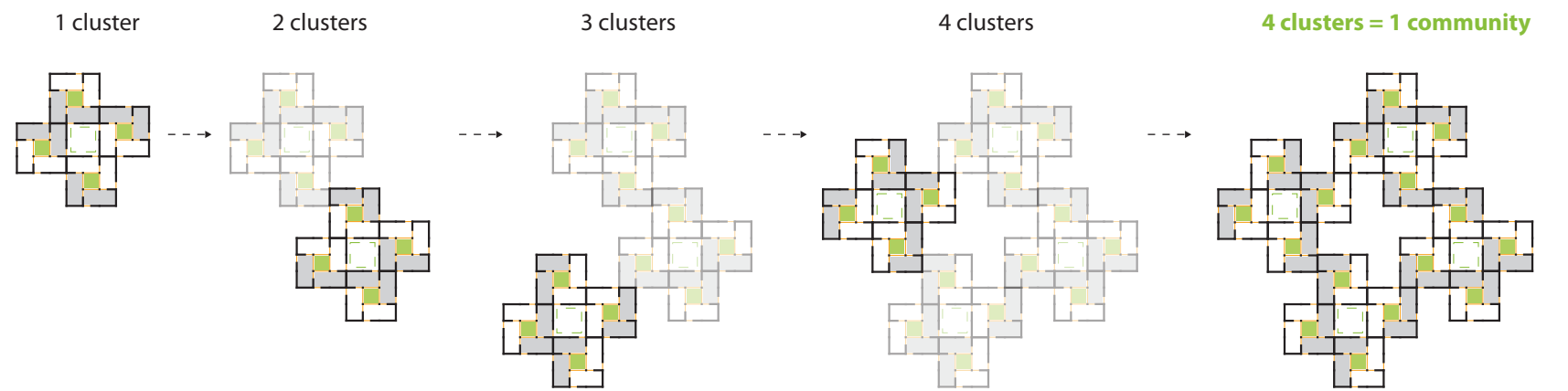
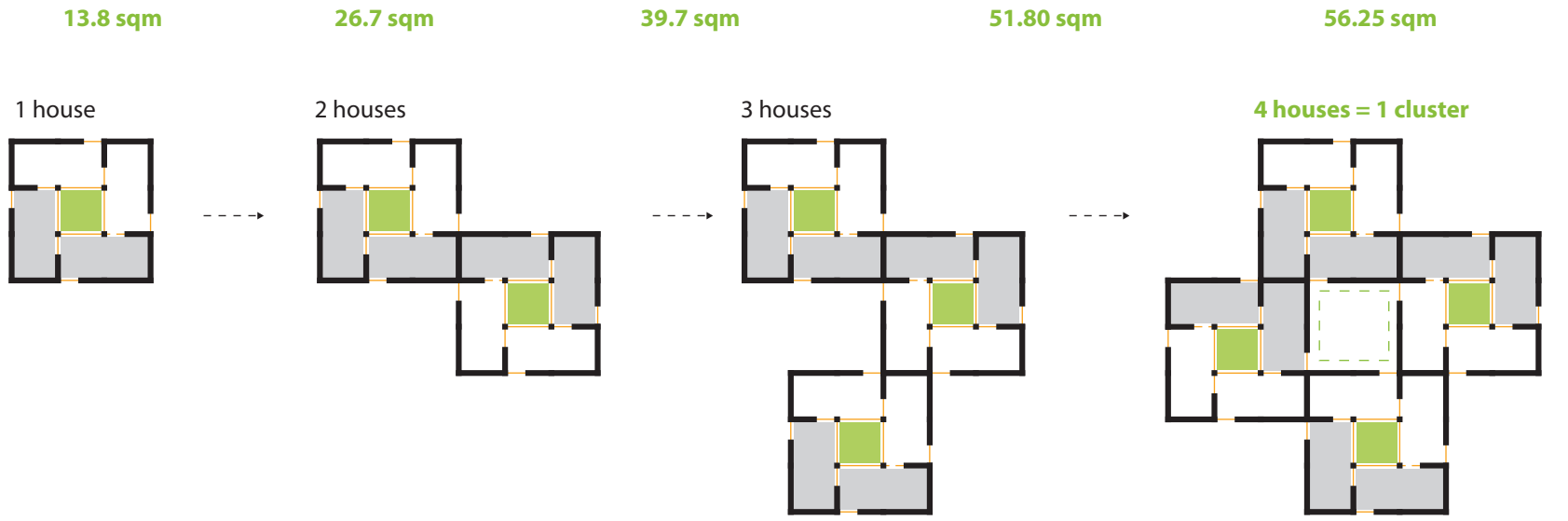
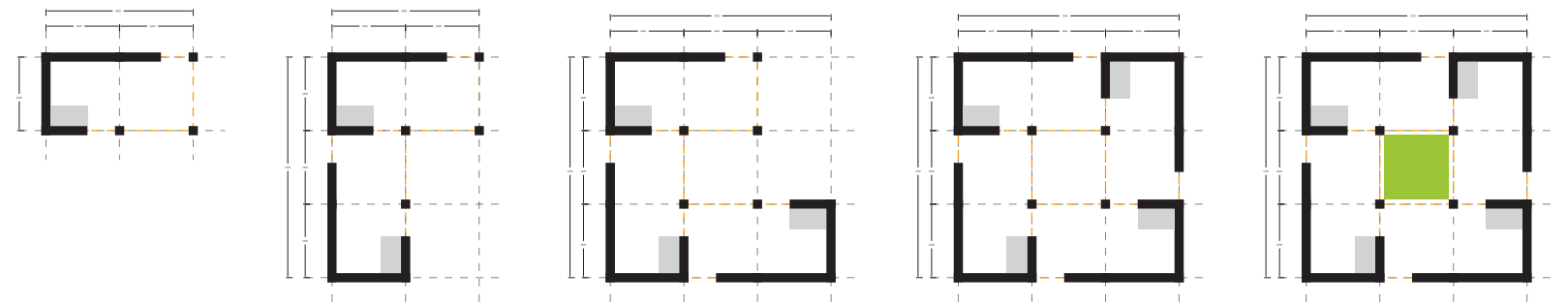
Prototyping:

This is a module prototyping house, a house composed of 4 modules. Each module is 13.8 sqm. The assembly method is the same for each unit, thus, if you know how to build one module, you know how to build them all. The house size can be contracted or expanded according to the size of the module. The pinwheel concept can be further carried on for housing clusters.

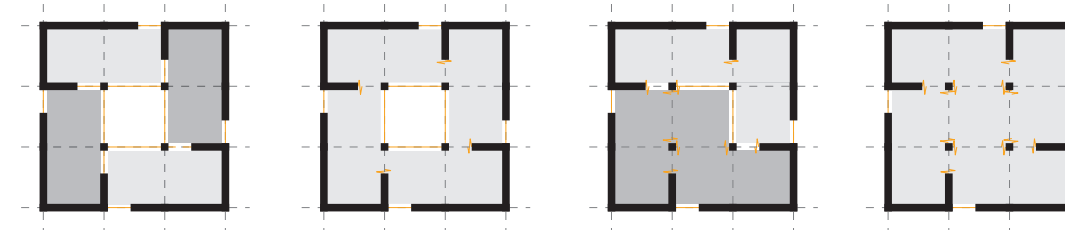


pinwheel unit

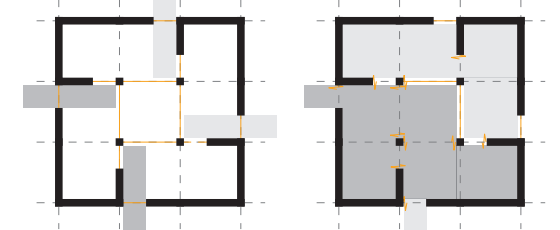
If you know how to build 13.8sqm, you know how to build them all!



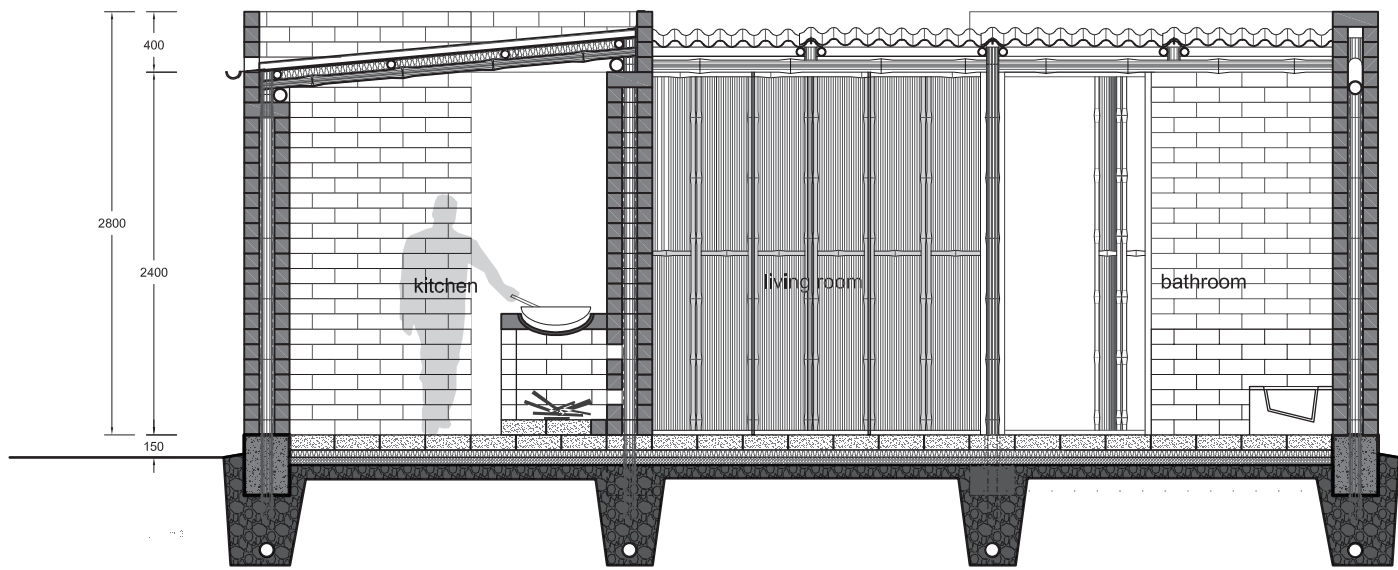
internal flexible spaces



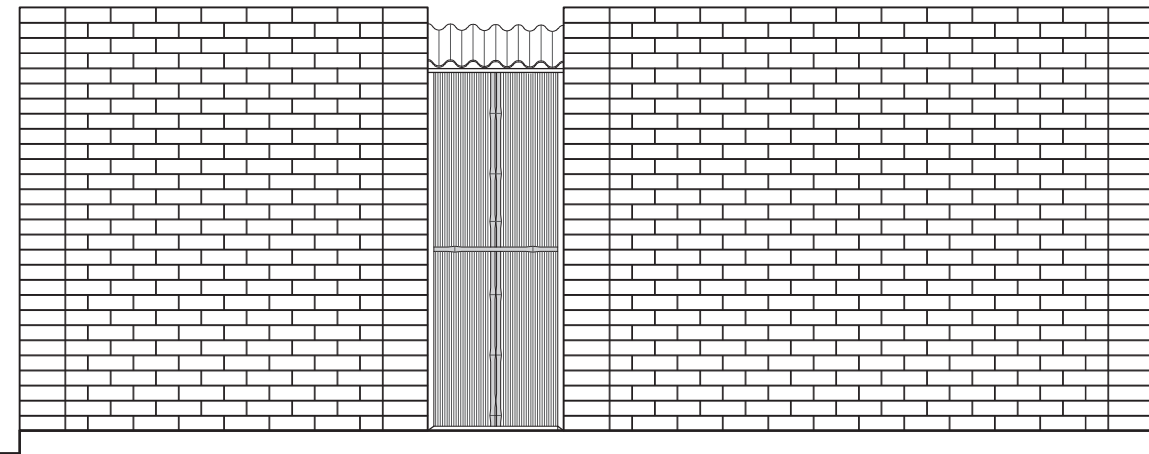
external flexible spaces



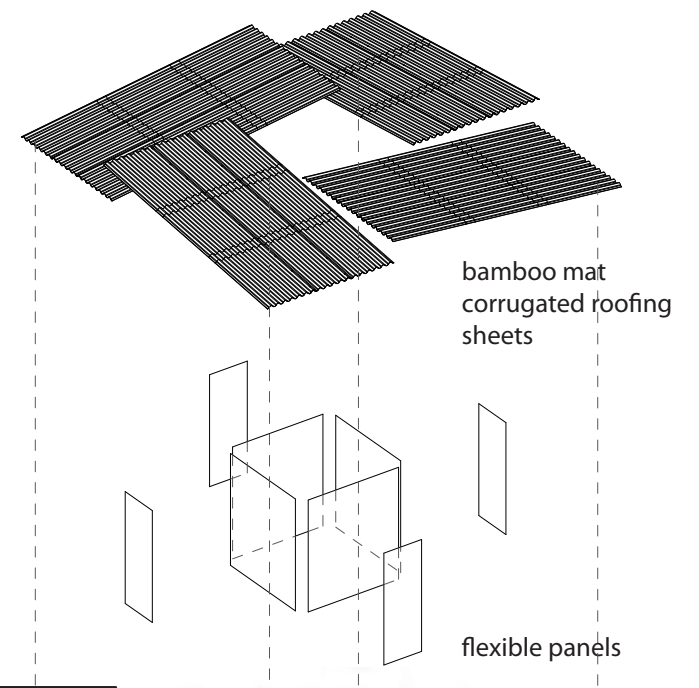
all close - 4 individual spaces semi-open - 1 continuous space semi-open - 2 spaces all open - 1 open space visual connection extend to the courtyard



section a
scale 1:50

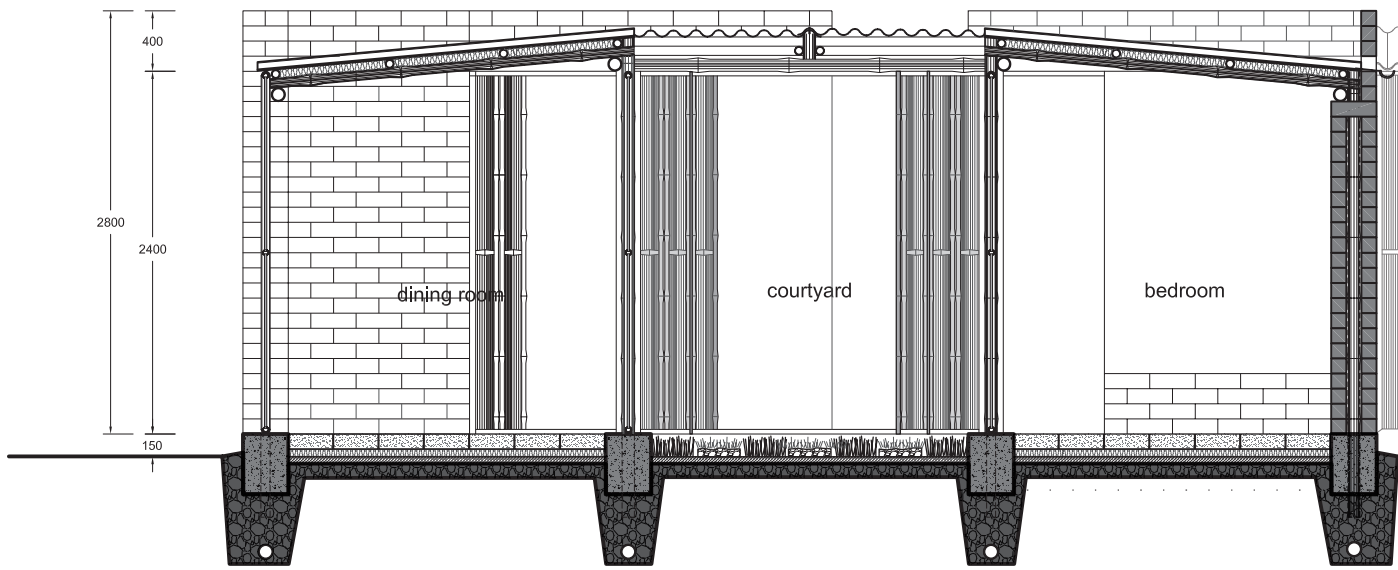


elevation
scale 1:50

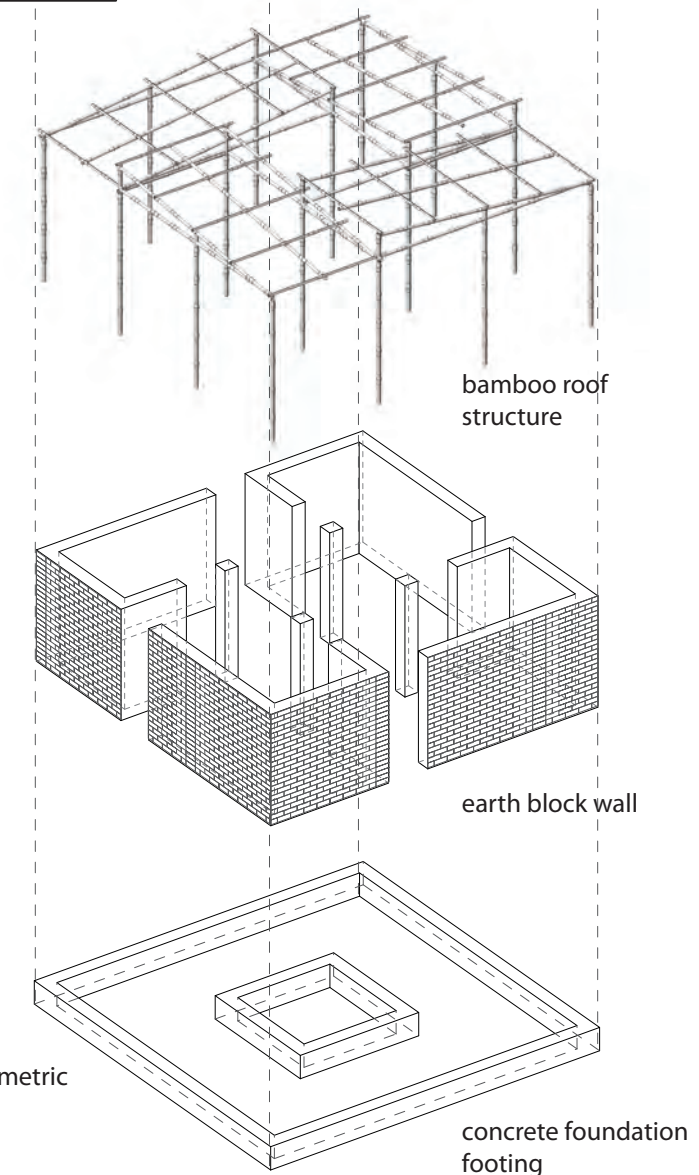
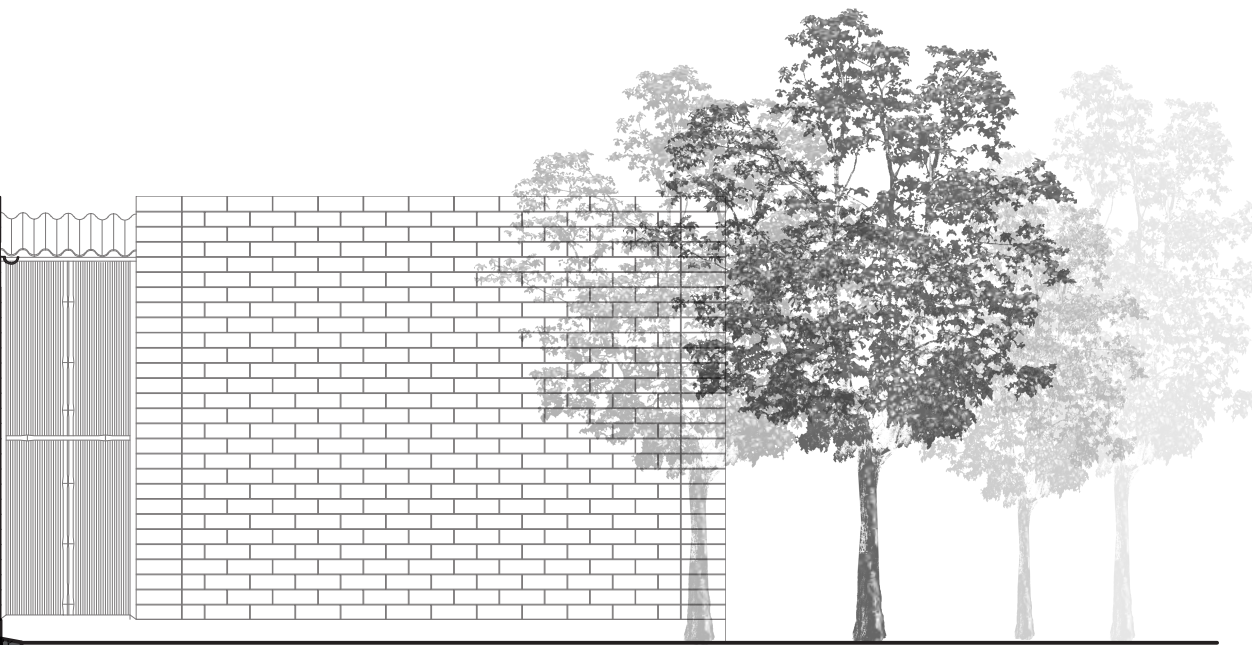


bamboo mat
corrugated roofing
sheets

flexible panels



section b
scale 1:50



bamboo roof
structure

earth block wall

axonometric

concrete foundation
footing