

plan
1:50

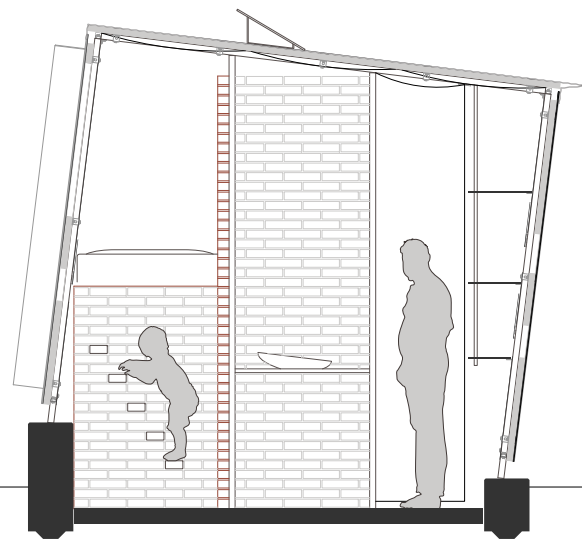
The Drunken House

Unistrut steel frame with various wall and roof panels on 1m module.

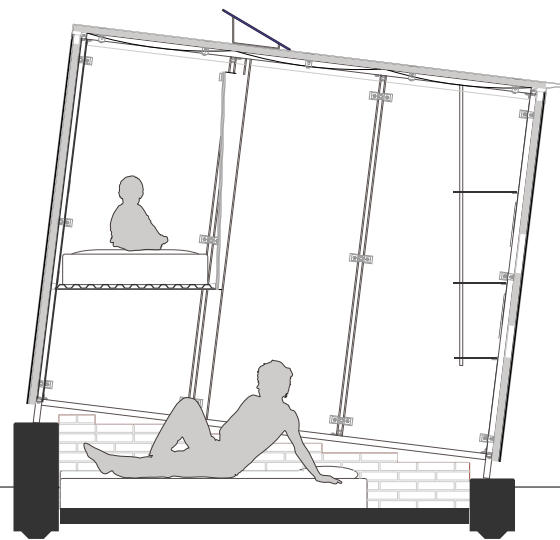
Typical panel construction is corrugated polypropylene or corrugated polycarbonate sheet with extruded polystyrene insulation layer (4cm thick). Interior is outfitted by occupant using local materials (likely brick, wood, and fabric).

Gaps between panels are stuffed with expanded polyethylene sheet to prevent thermal bridging and covered with corrugated polypropylene either flat for normal joints or with vertical louvers for solar shading.

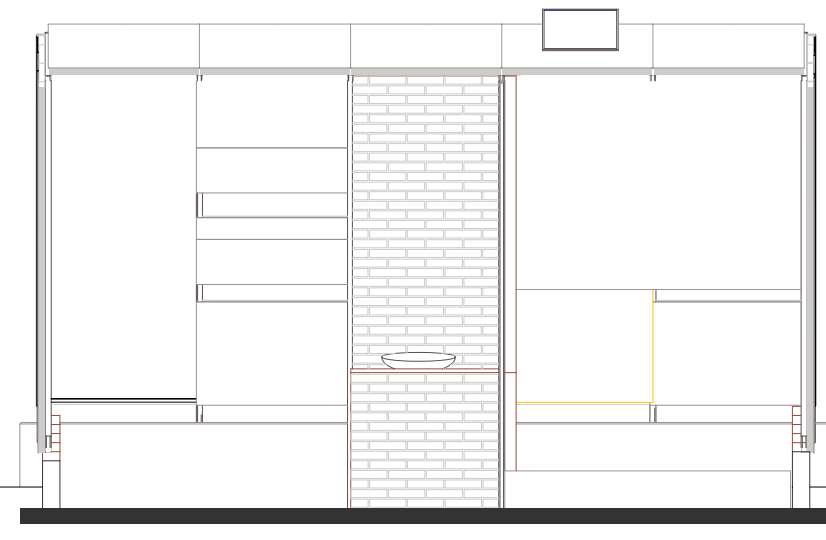
House tilt should be toward the south (in northern hemisphere). Angle should be determined, if possible, according to latitude. Ideal angle is latitude - 23.5°. For Chengdu, 7°.



section aa
1:50



section bb
1:50



section cc
1:50