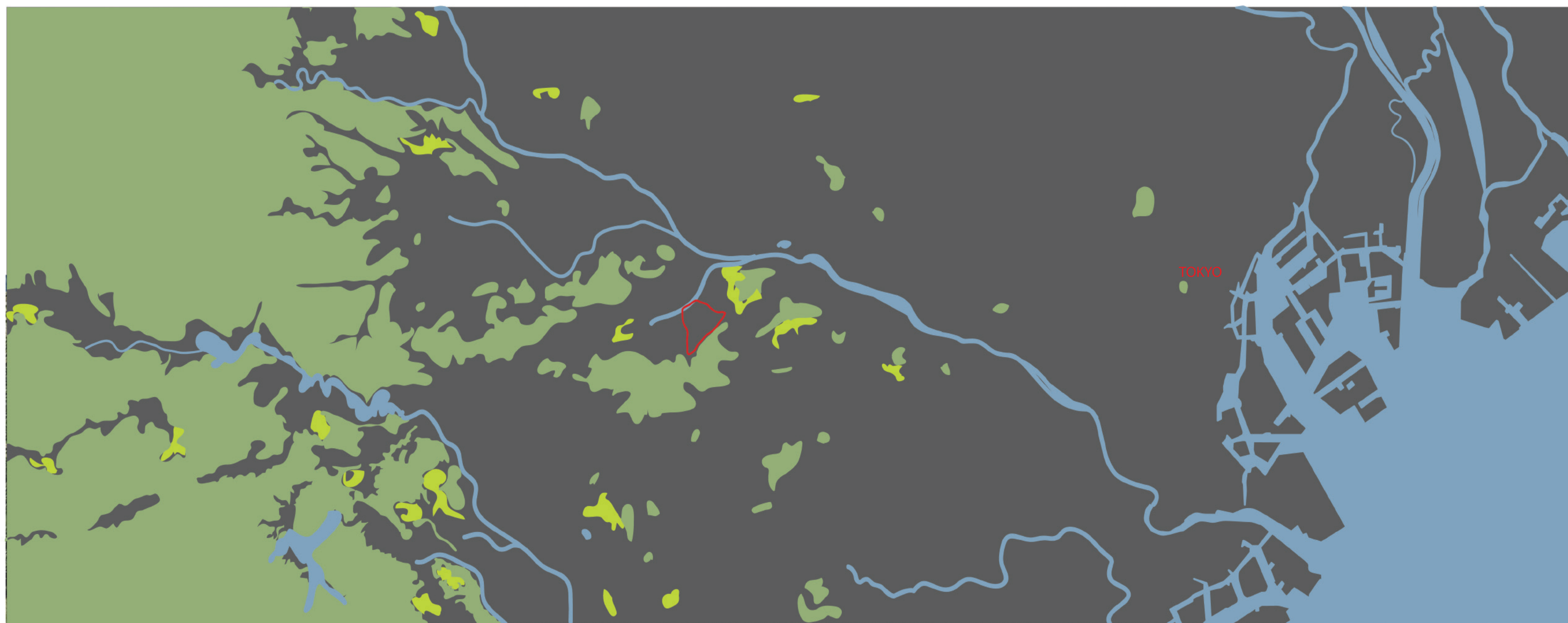


TAMA NEW TOWN

context



1965 plan



original topography



1965 construction



From Grey to Green: Guiding Principles

WASTE and WATER CYCLE: Complete the hydrological cycle by treating 100% of water and waste (sewer, gray water, storm water) on-site and at all scales (from pool to planet: buildings, eco-machines, natural systems)

MAXIMIZE ON-SITE FOOD PRODUCTION: Increase self-reliance and local food production especially of fruits and vegetables.

TOTAL and EFFICIENT ENERGY: Utilize on-site renewable energy technologies (photovoltaics, concentrated solar power, wind, waste to energy, etc) and site plan for maximum benefits of passive and climatic power conservation.

EFFICIENT MOBILITY & CIRCULATION: Use new modes of transportation that reduce energy consumption from local to regional, from personal to shared. Reshape and organize the circulation patterns to correspond to new travel modes and behavior.

INTEGRATED INFRASTRUCTURE SYSTEMS: From embedded ubiquitous digital technologies to EcoEngineering, infrastructure systems and buildings should enhance system flows and combine delivery methods.

HABITAT & WILDLIFE: Retain, construct and restore ecological matrices to support animal species, vegetation and topographical features. Conserve and protect existing features during construction. Connect local level networks to regional systems.

STREAMS & RIVERS: Enhance and rehabilitate existing waterways. Restore and protect the watershed integrity and enhance it by using technology.

INNOVATIVE MATERIALS: use building materials and site products (pavers, walls, etc) that reduce energy consumption (local materials) and have the potential to adapt to changes.

CULTURE & HERITAGE: Integrate local values through preservation, protection and integration into new design (buildings, landscapes, etc.)

EQUITY, HEALTH & HAPPINESS: improve living and working settings for all demographic and age groups.