

TAMA NEW TOWN

background

Tama New Town was planned in 1965 in an attempt to ease Japan's post-war rapid influx of population into Tokyo by providing hundreds of thousands of housing in a master planned, pleasant sub-urban environment. Tama NT is one of the largest housing developments in Japan. Suwa and Nagayama, two neighborhoods within Tama, are representative communities of the New Town typology in Japan.

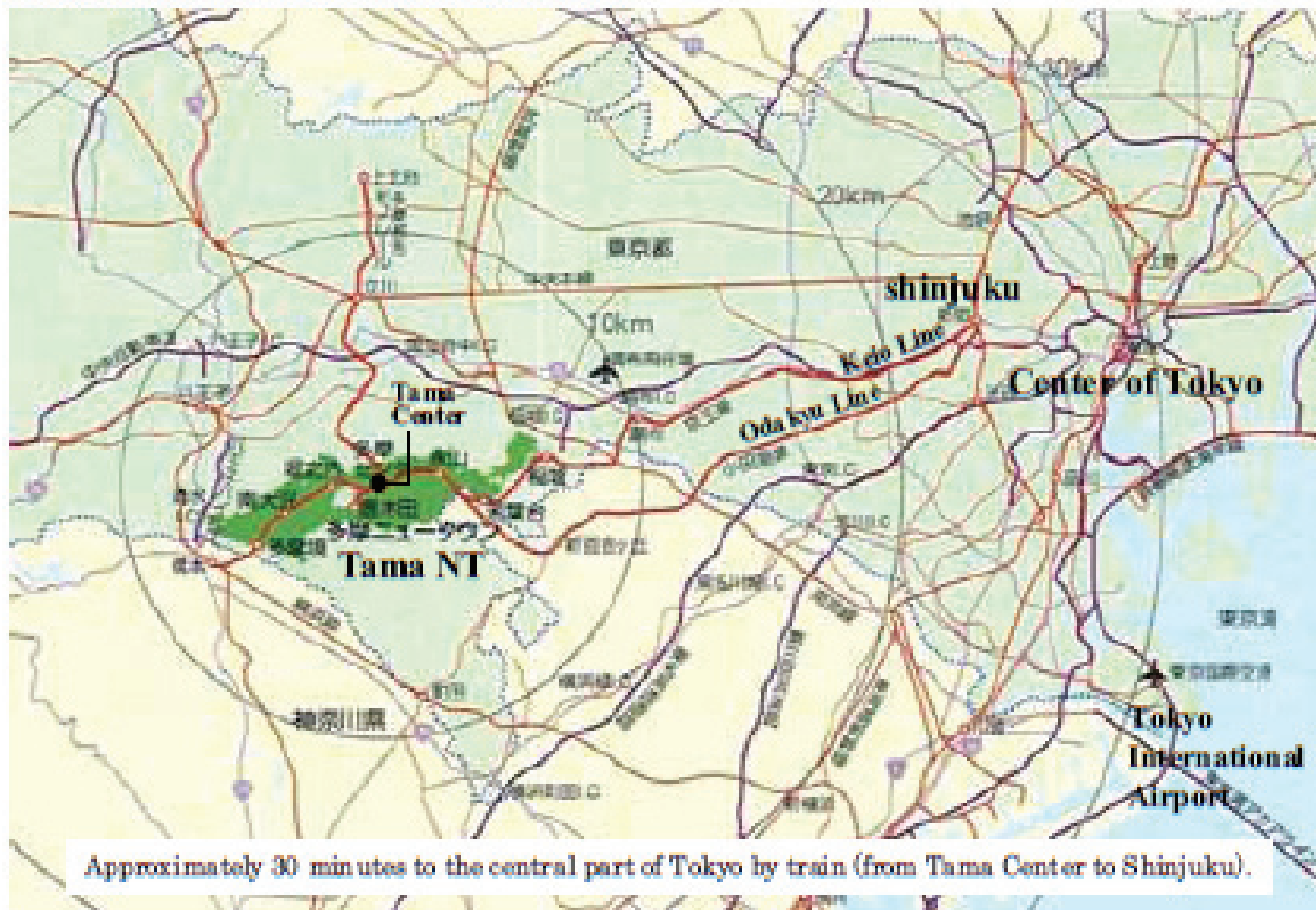
Four decades later, changes in demographics, transportation, infrastructure design, land use, life-styles and housing demand, have made Tama (and the many New Towns like it) challenging places to live.

Much of Japan's current housing, environmental and infrastructure problems are amplified and exemplified in Tama and in need of major shifts toward sustainable re-design and long-range planning.

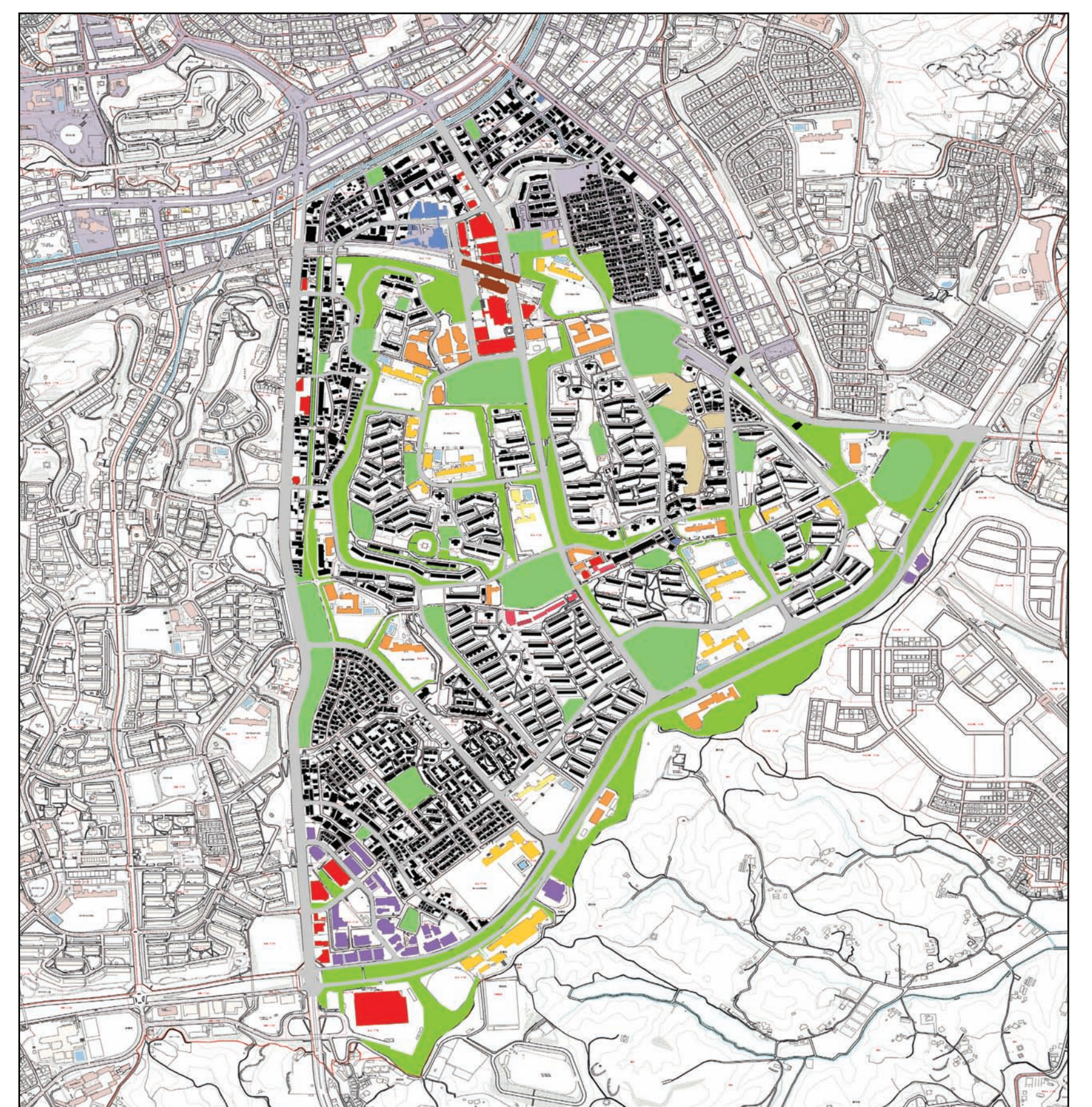


regional context

Location (Source: Urban Renaissance Agency)



nagayama+suwa districts



tama new town

