

食とつながる街 Shoku to Tsunagaru Machi

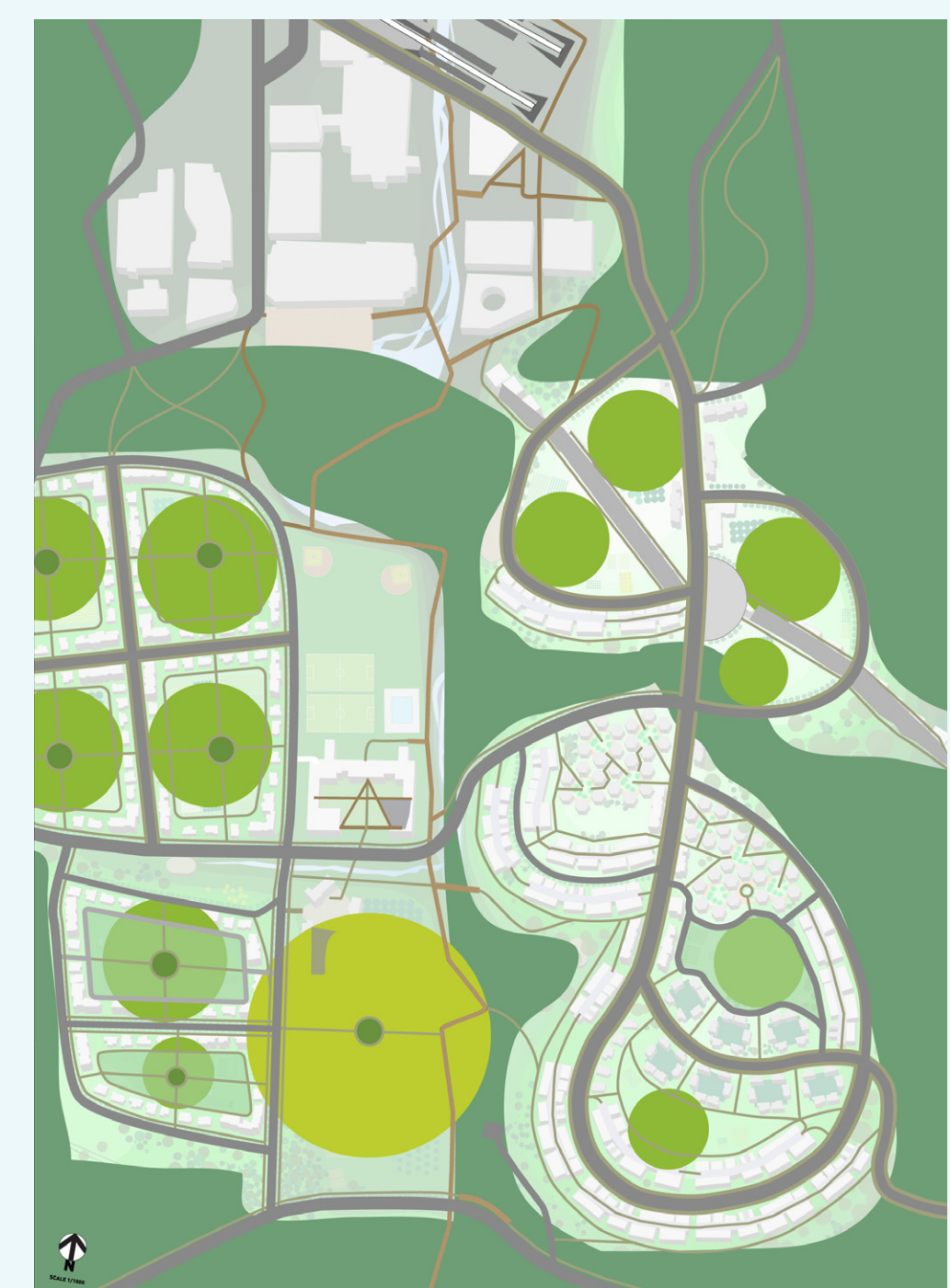
[town connected with food]



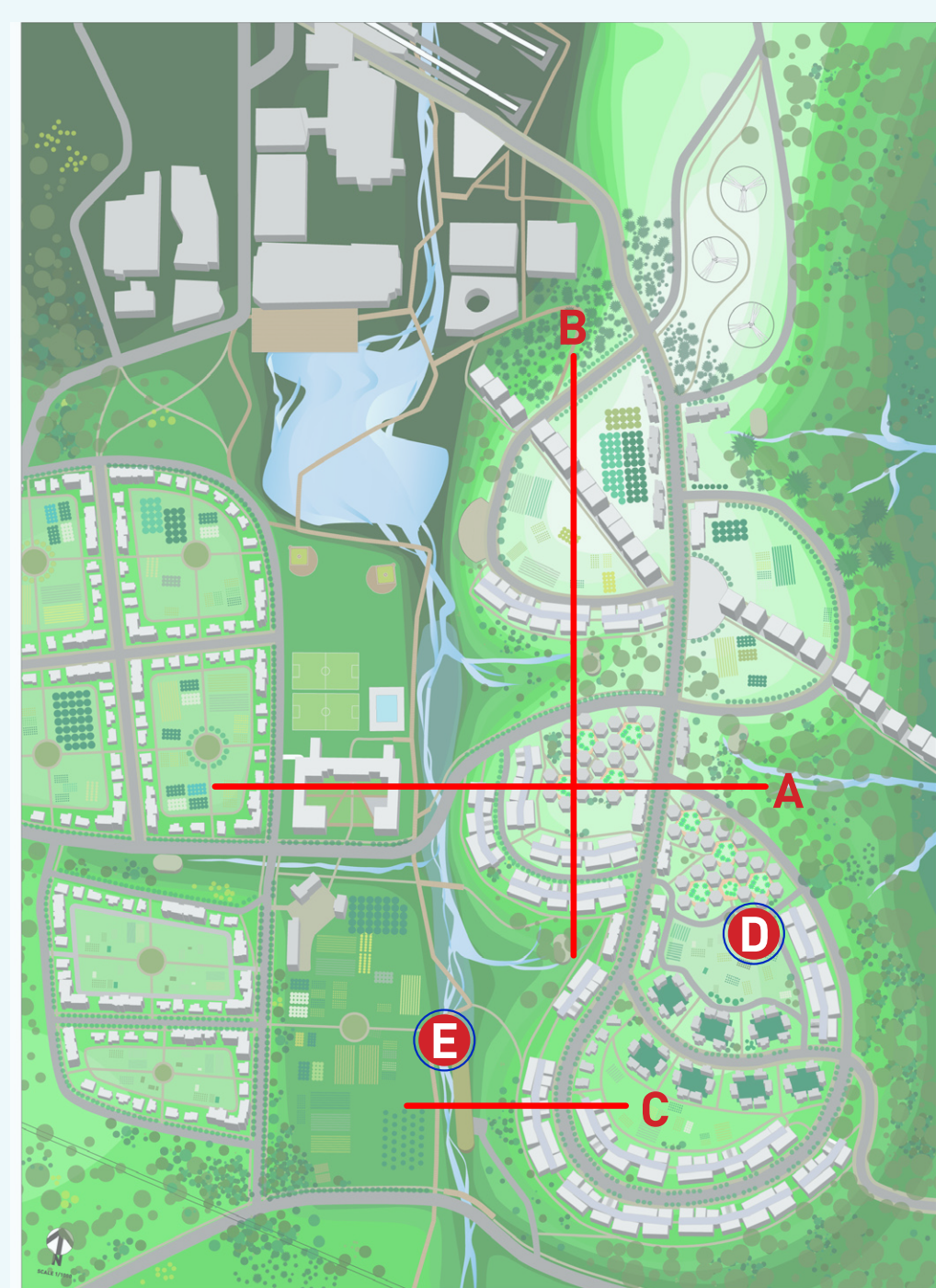
Vignette D: Agrihabra



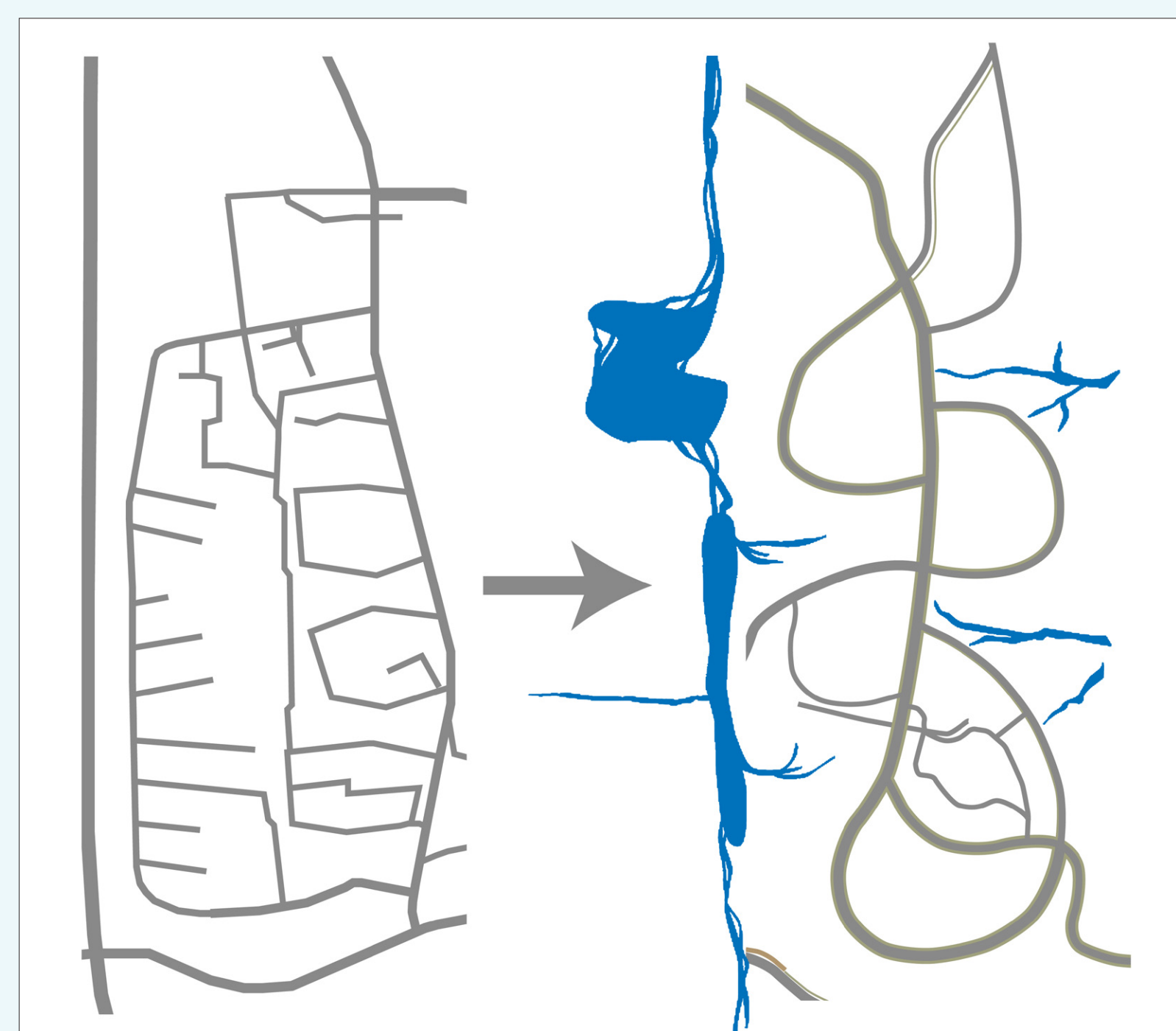
Vignette E: Processing Wetland



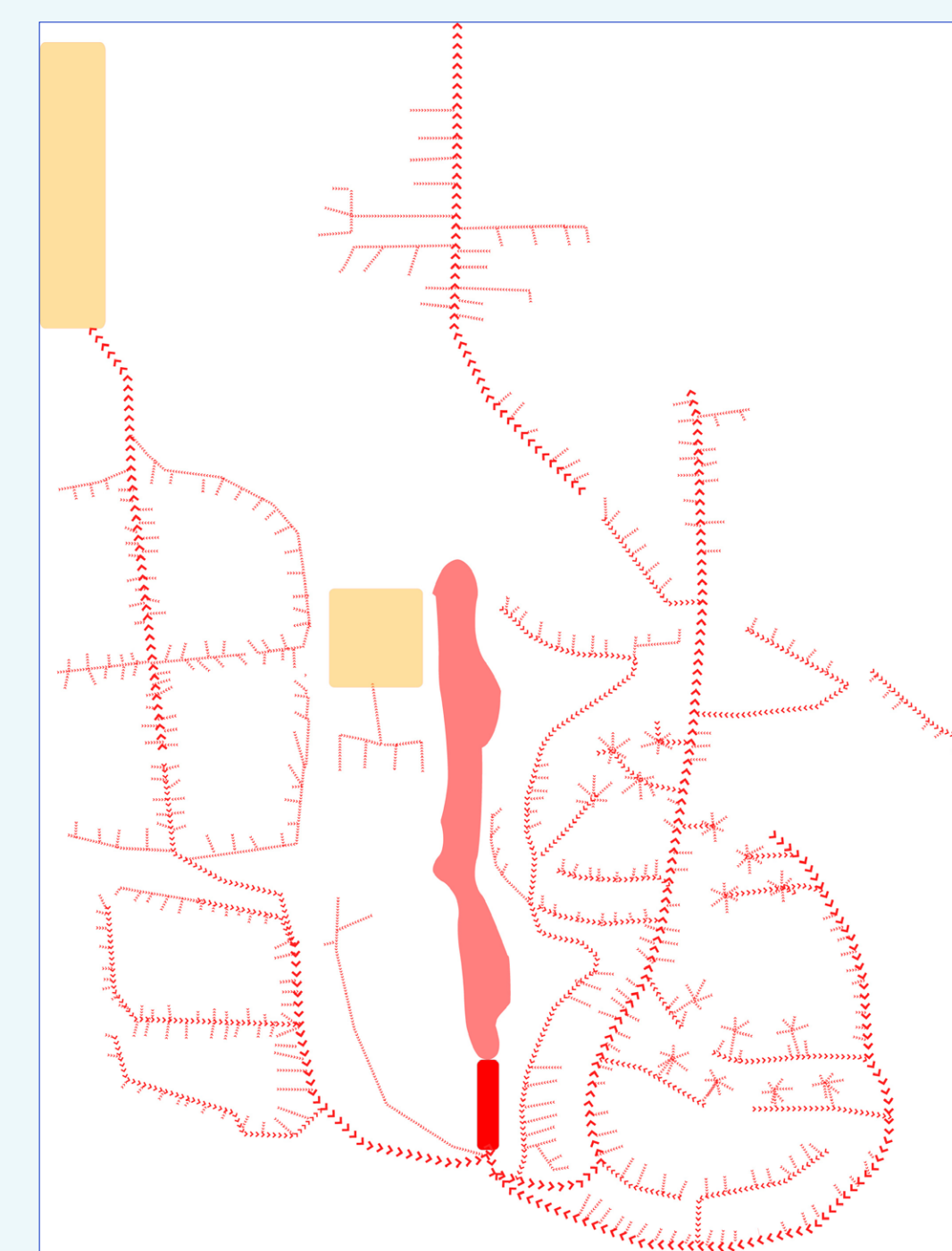
Organic Systems and Transportation



Sections and Vignettes

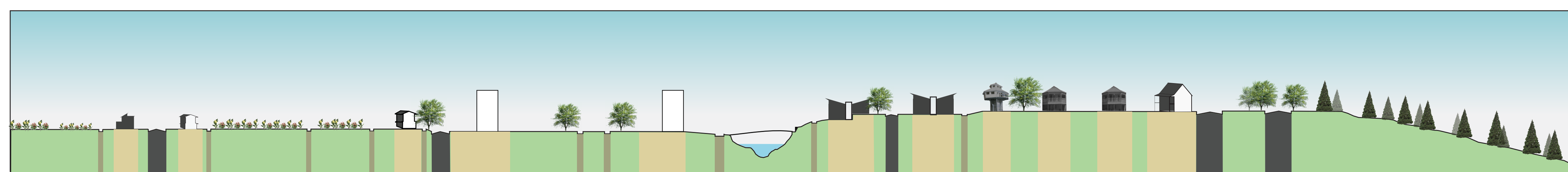


Site Transformation

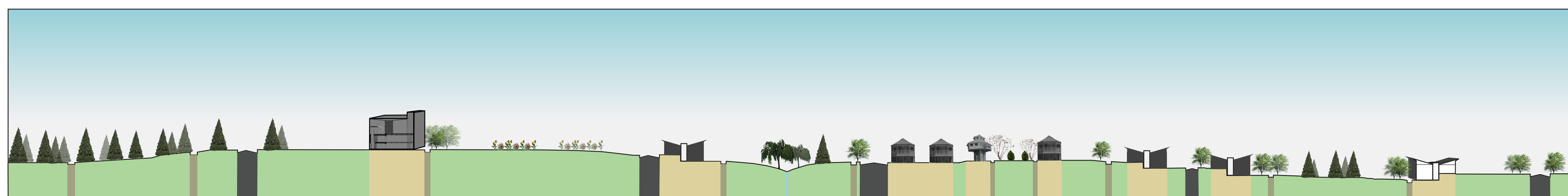


Sewer Diagram- Biodigester provides sewage treatment and cooking fuel to all areas it services

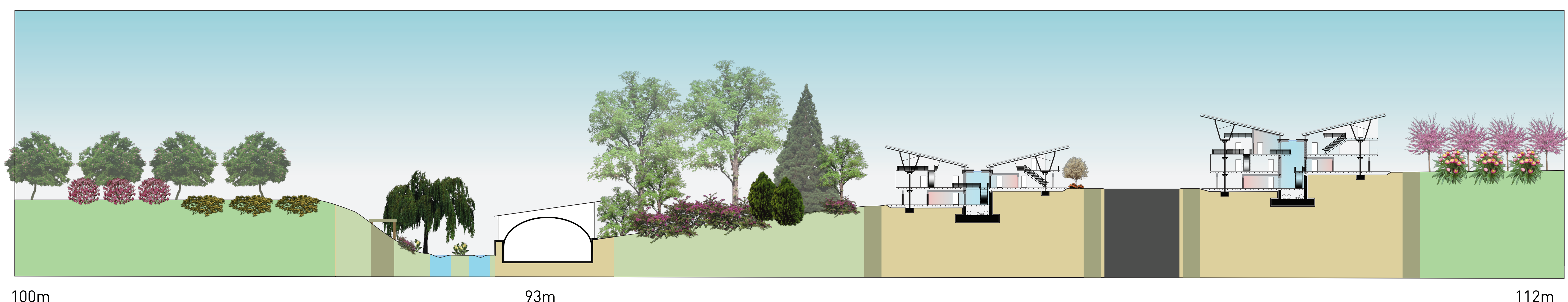
Farming: 10 hectares = total food for 200 or fruit and veg for 5,000 people



Section A . SCALE 1/1000



Section B . SCALE 1/1000



SECTION C . SCALE: 1/250

100m

93m

112m

